

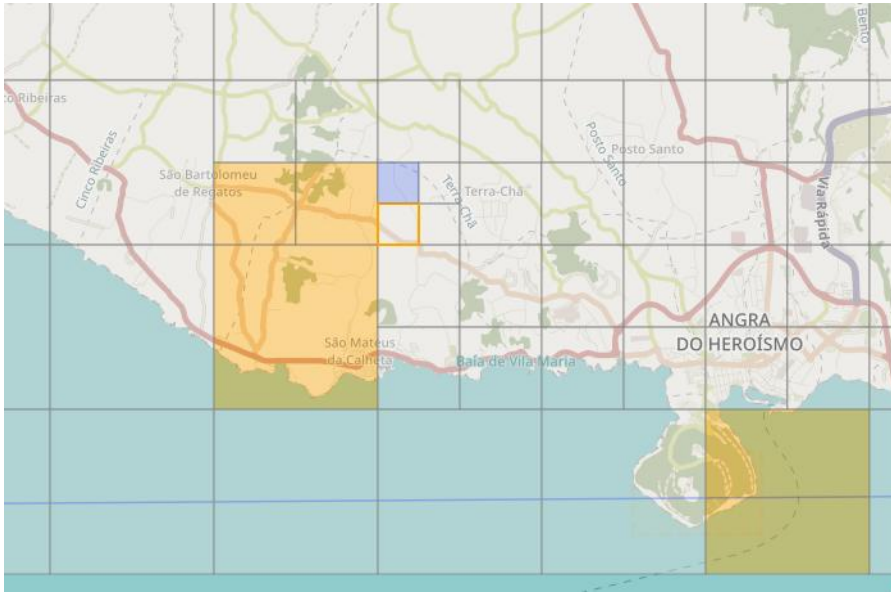
## Continuous work during the whole project on the map of Terceira - mapping all buildings, roads and street names

We mapped in Terceira taking in consideration the real possibility of an earthquake disaster on the island. Taking advice from the Civil Protection in Angra do Heroísmo, we mapped the residential buildings, adding house numbers and street names, fire hydrants and assembly points. <http://taches.francophonelibre.org/project/316> [1]

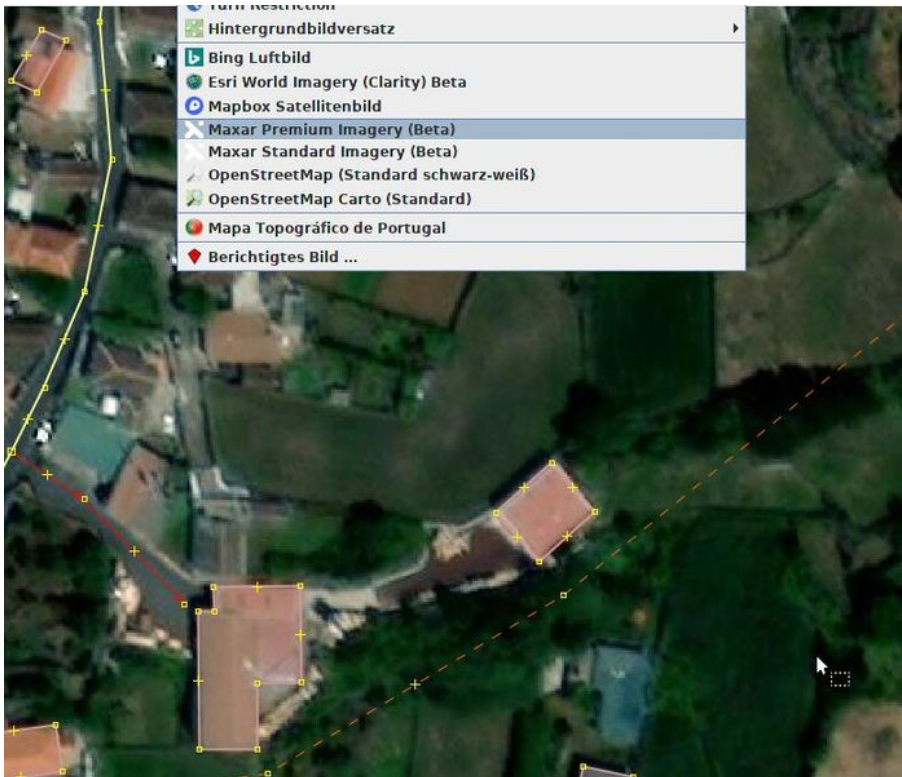
After visiting **Civil Protection** in Angra do Heroísmo, everyone became aware of the importance of mapping houses and streets in preparation for a **possible earthquake** in Terceira.

In order to keep the whole task manageable, we divided the island into **small squares** in the [Tasking Manager](#) [2]



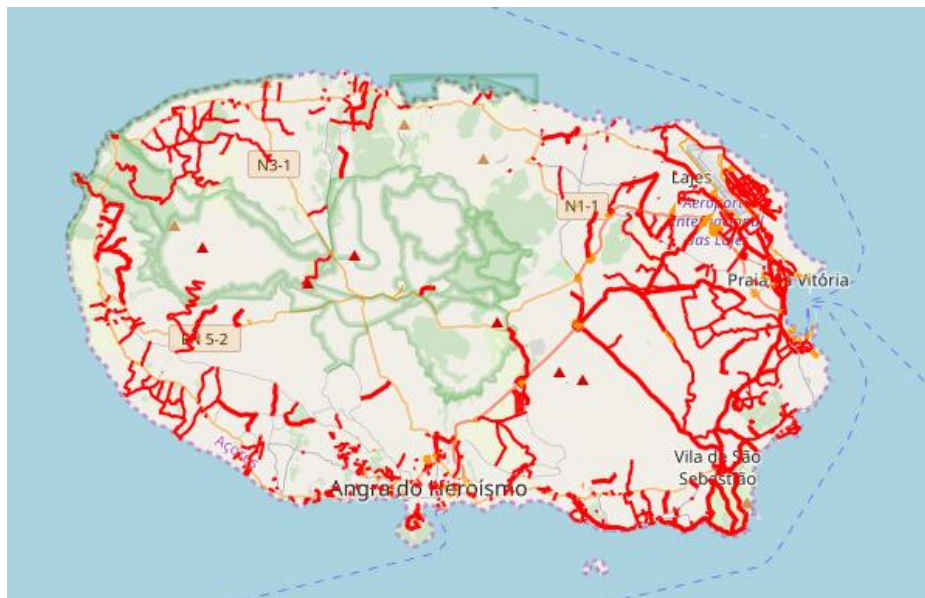
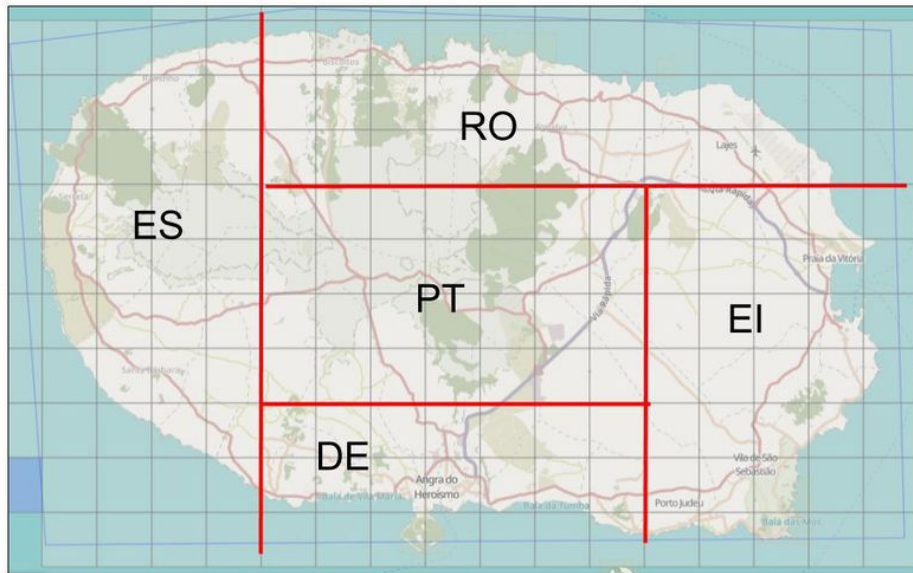


If a task was is to big, it can be splitted.

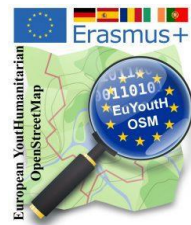


To know the location of roads and buildings, we used satellite images by Maxar Premium Imagery (Beta).

We shared the work between our partners.



The Portuguese team also has the task of determining the [street name](#) [3] on site and entering it in OpenStreetMap. Therefore we used the qa tool by Simon Poole.



With the end of the project, it can be seen that all houses and streets on the island have been mapped. Furthermore, as you can see in the picture below, about 95 % of the entries in the database have also been checked.

The screenshot shows a web interface for task management. At the top, there is a red navigation bar with 'Gestionnaire de Taches' and links for 'About', 'English', and 'derFred'. Below this, the task title '#316 - euYouth\_OSM' is displayed, along with 'Edit' and 'Export' buttons. A horizontal menu contains 'Description', 'Instructions', 'Contribute', 'Activity', and 'Stats'. The main content area is split into two columns. The left column shows 'Task #55' with a checkmark, 'Difficulty' set to 'Not assigned yet', a 'Review the work' button, a comment box, and a status of 'Unlocked' from '7 months ago'. The right column features a map of an island with a grid overlay. A legend indicates the map status: 'Cur. worked on (0)' (white), 'Invalidated' (grey), 'Done' (orange), and 'Validated' (green). The map shows most of the island's grid cells in green, indicating they have been validated. Labels on the map include 'Lajes', 'Praia da Vitória', 'Angra do Heroísmo', 'Porto Judeu', and 'Baía da Salga'. A scale bar shows 10 km and 5 mi. The bottom right corner of the map area says 'Leaflet | Map data © OpenStreetMap contributors'.

### Links:

- [1] <http://taches.francophonelibre.org/project/316>
- [2] [https://wiki.openstreetmap.org/wiki/Tasking\\_Manager](https://wiki.openstreetmap.org/wiki/Tasking_Manager)
- [3] <http://qa.poole.ch/?zoom=7&lat=39.15&lon=-27.78>