

better-osm-org

Extra features for advanced users on OSM.org

better-osm-org

better-osm-org is being developed by OSM user TrickyFoxy (deevroman in Github) and extends functionality to OSM.org via userscripts.

Installation instructions can be located at the developer's Github page:



<https://github.com/deevroman/better-osm-org>

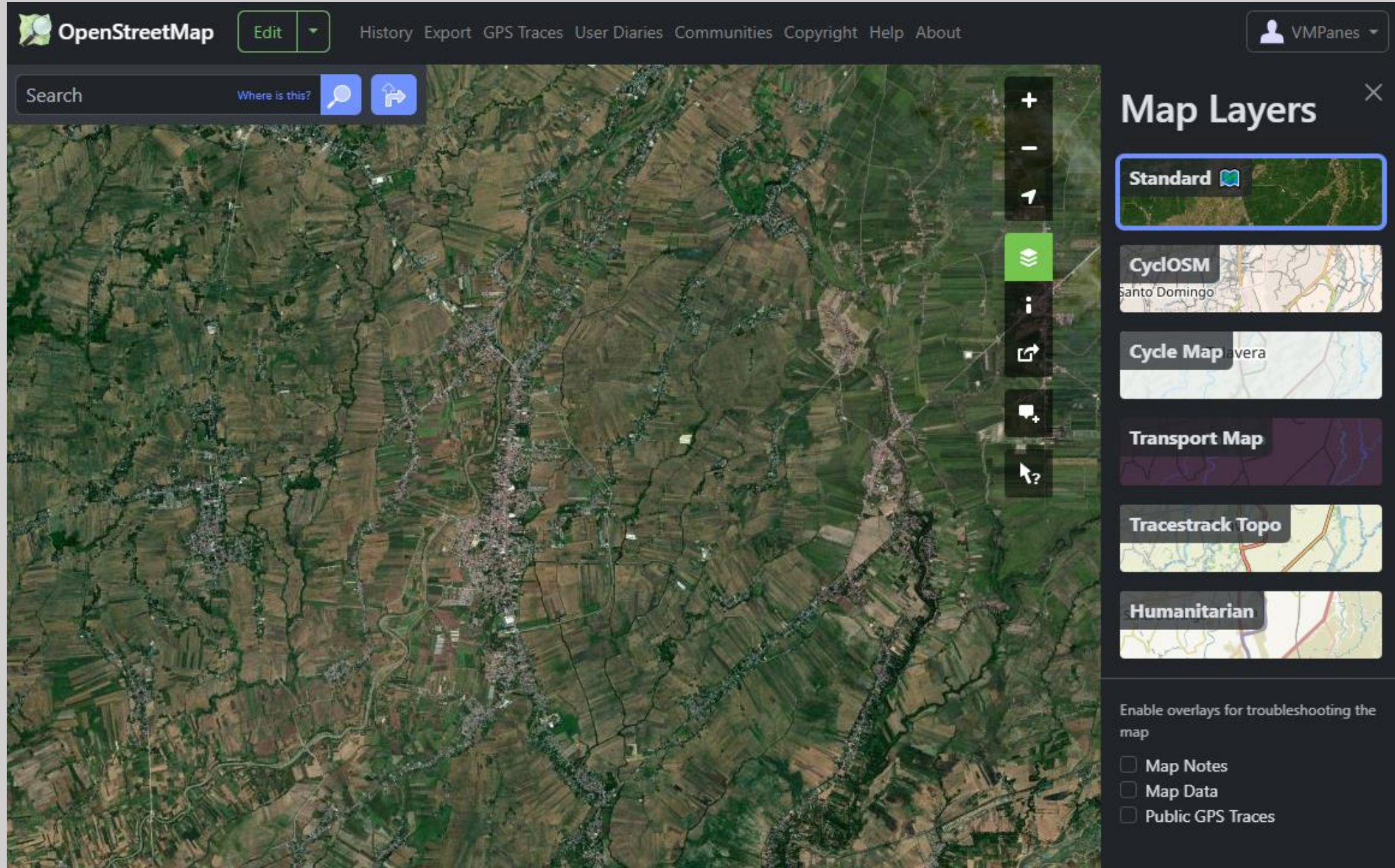
better-osm-org

Userscript adding several improvements for experienced osm.org users


1. Install [Tampermonkey](#) or [Violentmonkey](#)
2. [Install](#) script

Also works in Firefox for Android

Satellite Imagery (ESRI)





Detailed changesets

 **OpenStreetMap**

Edit

History Export GPS Traces User Diaries Communities Copyright Help About

Changeset: 164533392

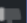
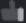


[Imus] Modified POIs, buildings, and land use; added house numbers and address tags

4 days ago bukaskalyemapa

created_by	JOSM/1.5 (19369 en)
source	Esri World Imagery; Esri World Imagery (Clarity) Beta; survey

Discussion



Subscribe

Ways 1-59

<>

Legaspi Building (118681896), v10

addr:barangay

 Tanzang Luma II

addr:house number

 550

addr:street

 Aguinaldo Highway

name

 Legaspi Building

—

 Sampaguita Street (151712550), v8

access

 private

highway

 tertiary → residential

—

 Daisy Street (151712796), v8

access

 private

highway

 tertiary → residential

—

 Bluebell Street (151712829), v12

access

 private

highway

 tertiary → residential

—

 Ilang-Ilang Street (151712904), v9

access

 private

highway

 tertiary → residential

—

 Cattleya Street (151712989), v7

access

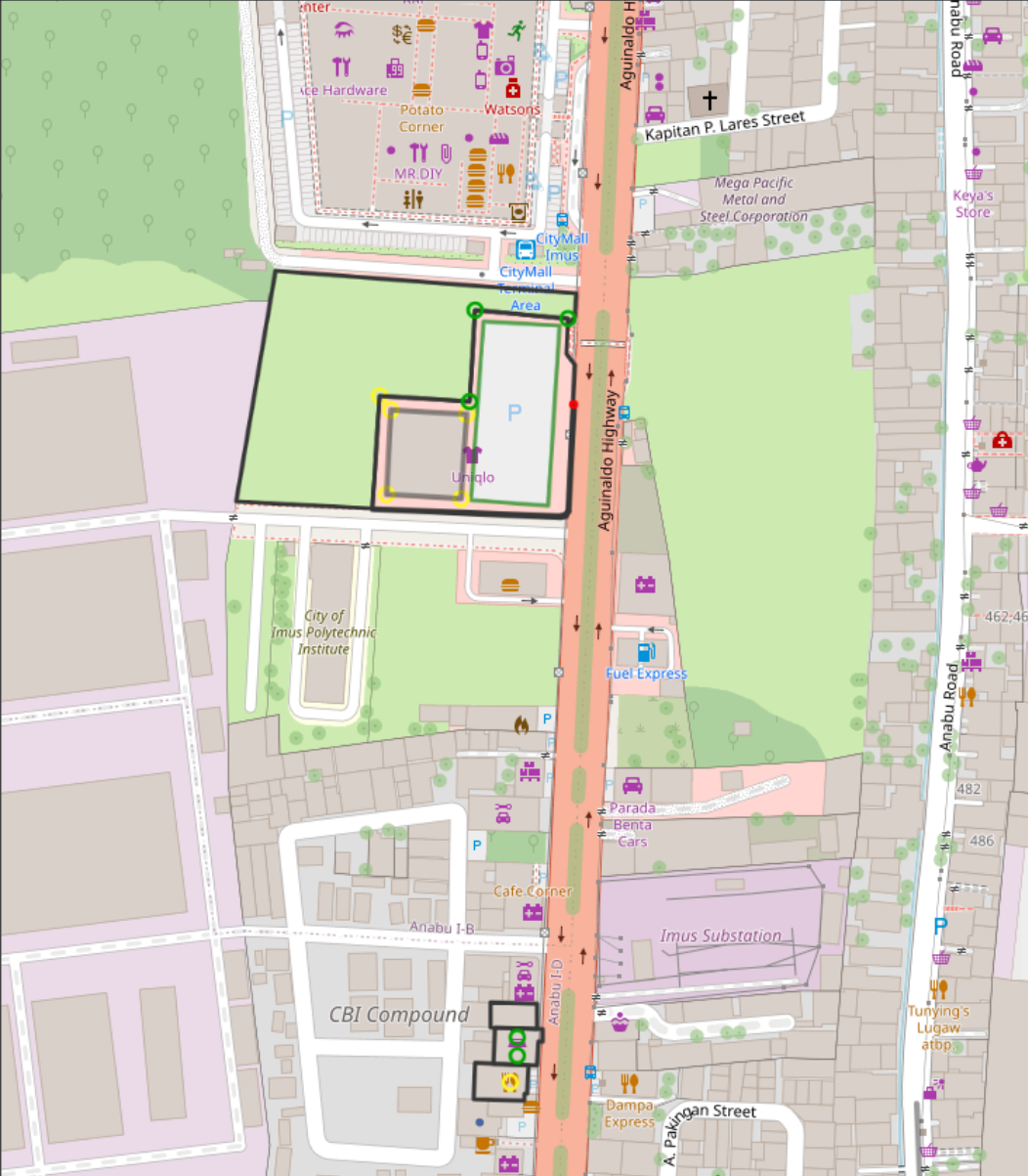
 private

highway

 tertiary → residential

—

 Ilang-Ilang Street (151713211), v10



Hotkeys for shortcuts and additional tools

Hotkeys

- `<` `>` for user changesets
- `N` — on/off notes layer
- `D` — on/off Map Data layer
- `G` — on/off GPS tracks layer
- `S` — on/off satellite layer (Firefox only)
- `H` — open object history
- `1` — open first version of object
- `Z` — zoom to changeset/object bbox
- `E` — Open editor
- `8 / 9` — prev/next map position
- `0` — open OSMCha
- `shift` + `0` — open Achavi

Experimental hotkeys:

- `K` `L` — navigation between changeset elements
- `J` — open objects from changesets in JOSM
- `shift` + `J` — open objects from changesets in Level0
- `shift` + `L` — pan to current location
- `shift` + `H` — open My changesets
- `Y` — open Yandex.Panoramas
- `shift` + `E` — open second editor
- `shift` + `N` — create new note
- `C` — Open changeset of object version
- `Q` — Close sidebar
- `shift` + `Z` — pan to real changeset bbox (without relations bboxes)
- `0` — zoom to global view
- ``` — hide geometry from map
- `T` — toggle between compact and full tags diff mode
- `U` — open user profile
- `shift` + `U` — open your profile
- `shift` + `/` — search with Overpass

A detailed map of Iloilo City, Philippines, serves as the background. It shows the Iloilo River flowing through the city, with various subdivisions and landmarks labeled. Key areas include Saint Claire Subdivision, Hibao-an, Ana Ros Village Subdivision, Linstle Ville, Pakiad, So-oc, Navais, Punong Lapuz, and the Visayas Container Terminal. Major roads like Sunset Boulevard and Rizal Street are visible, along with highways 512 C-1 and 501. The map is partially obscured by a large blue rectangle in the center.

Thank you!

“Let’s build a better map, one edit at a time.”