

# OpenData, imports and after...



Christian Quest – [cquest@openstreetmap.fr](mailto:cquest@openstreetmap.fr) @cq94

Frédéric Rodrigo – [frodrigo@openstreetmap.fr](mailto:frodrigo@openstreetmap.fr) @fre2d

06/09/2013 – (c)left 2013 - CC-BY-SA v3.0

# OpenData

- A fact: always more OpenData
- A problem: heterogeneity
  - Spatial : covered area
  - Quality : made for a specific use
  - Attribute : originally GIS designed
- OSM as platform: integrating OpenData
  - Uniformisation
  - World wide
  - Contributive



# Step 1: Quality evaluation

- Geo location accuracy
- Available attributes
- Freshness of data

→ worth to import ?

# Step 2: Extraction / Conversion

- Projection → WGS84
  - From everything
  - From unspecified and moving
- Format CSV, .OSM
  - From Excel, CSV and Shape or scraping
- Specifics: Shp2osm, Shp2pgsql
- Qgis: Shp or CSV → Shp
- JOSM: OpenData plugin: Shp or CSV → .osm



# Step 3: Import

- Discouraged
  - Bad effect: “TIGER syndrom” mainly due to low quality data
  - “better than nothing” not always better
  - but... Good effect with high quality data
- Technical: not for everybody → team work
- Merge identical object
  - Output → list of non automatic mergeable objects

# Step 3b: Import → Integration

- Half-manual integration
- Non auto mergeable → made by hand
- Non integrable data
  - Bad quality
  - Too many conflict with OSM data



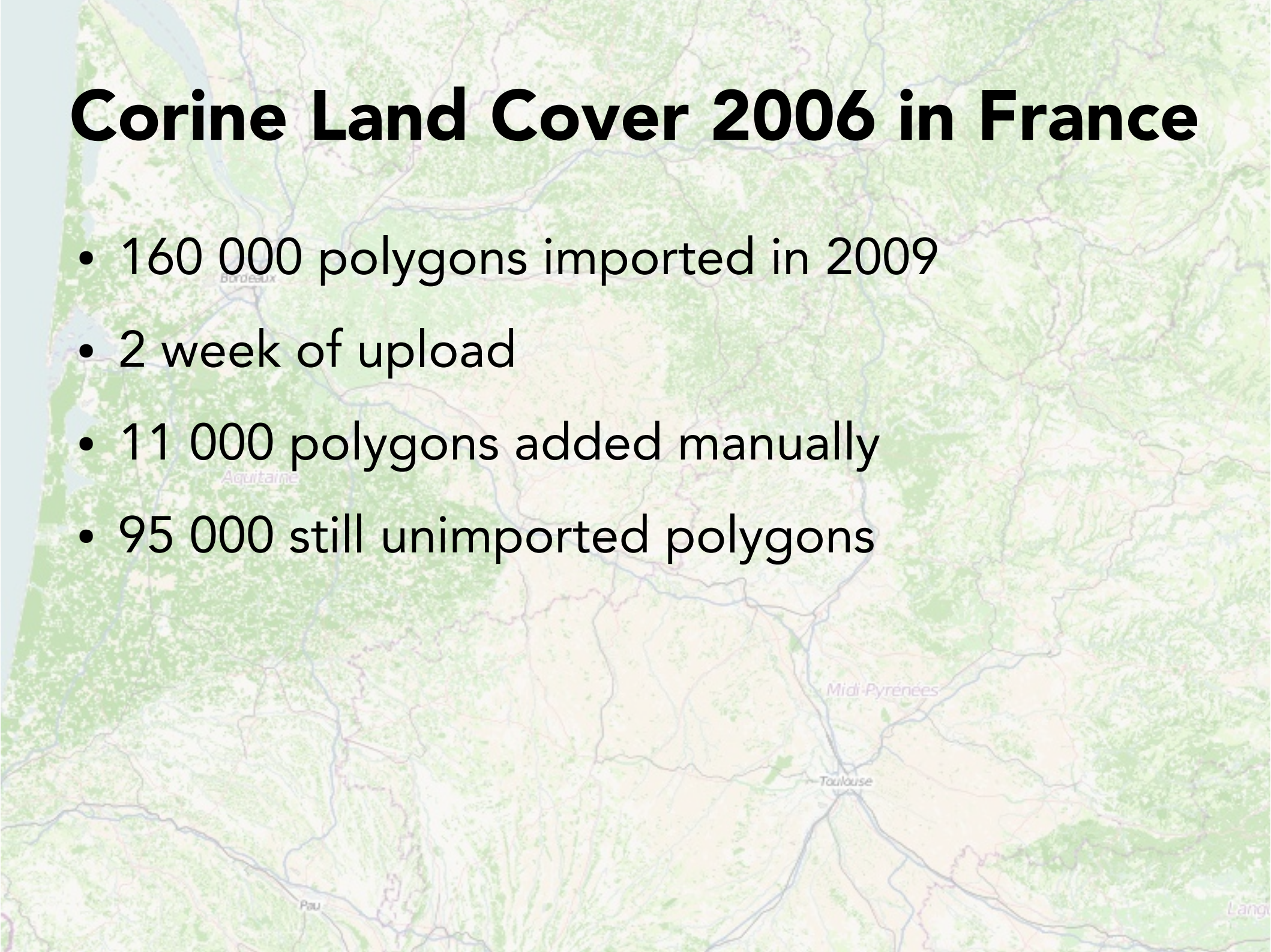
# Tools

- Specifics
- JOSM
  - By hand
  - Conflation plugin : by distance / similarity
- Osmose
  - Quality assurance tool (QA)
  - Half-manual proposed integration
  - Helps detecting missing features using OpenData
  - "OpenData by OSM" as derivate product



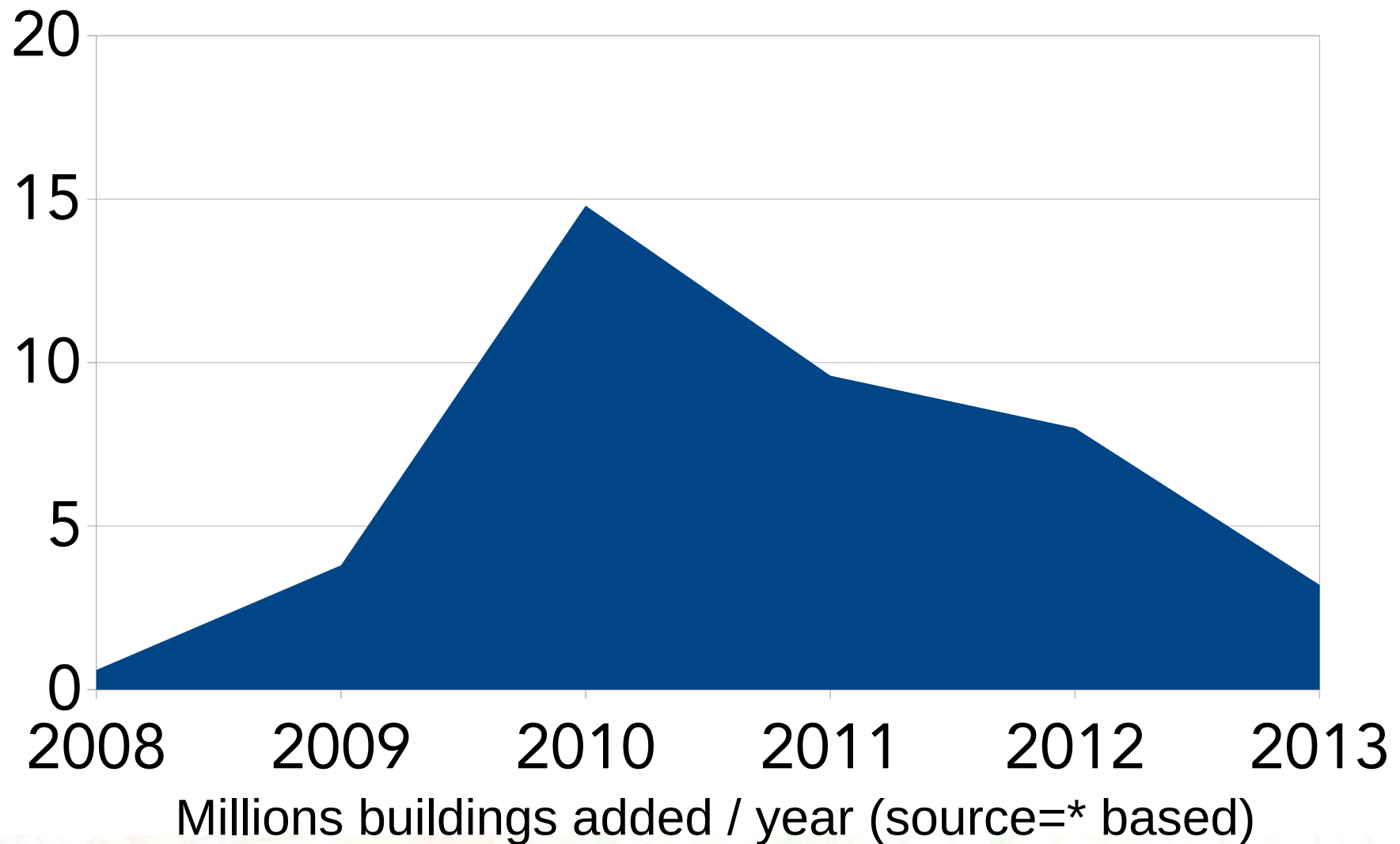
# Corine Land Cover 2006 in France

- 160 000 polygons imported in 2009
- 2 week of upload
- 11 000 polygons added manually
- 95 000 still unimported polygons

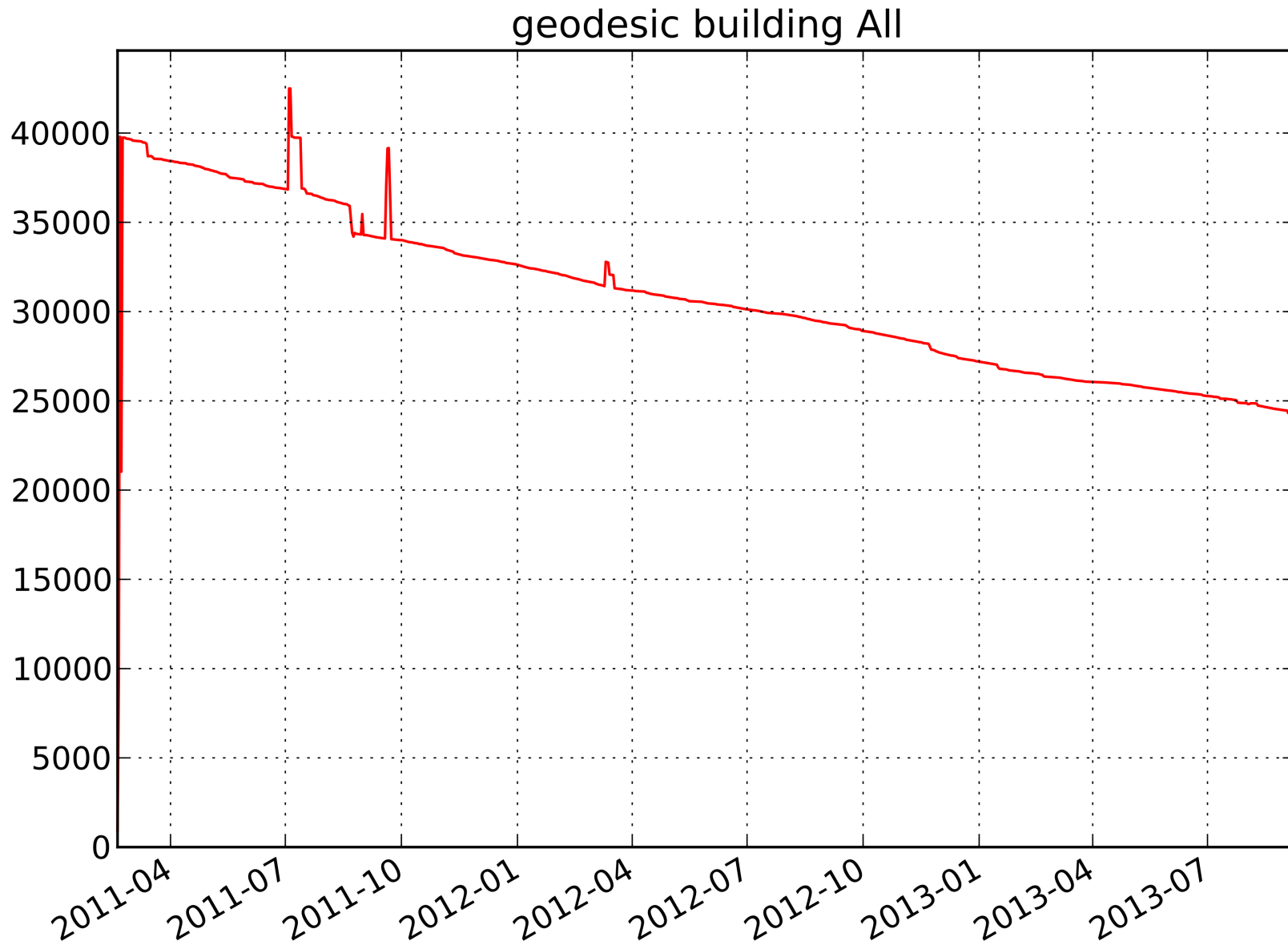




# Buildings added from cadastre data in France



# Missing buildings graph trend



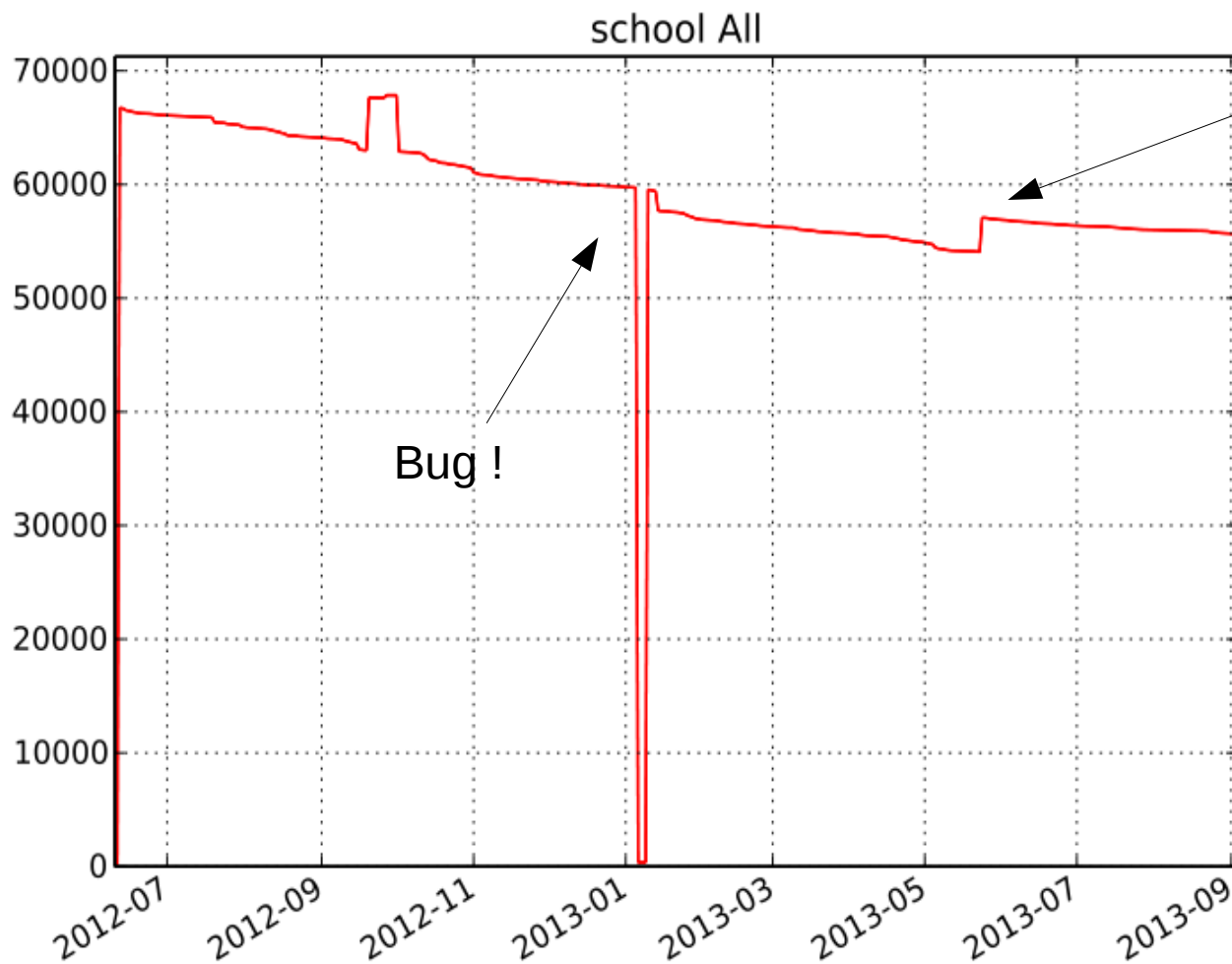


# Addresses

- Nantes : 8 month of half-manual integration (150k+)
- Toulouse
- Bruxelles
- ...
- Todo : Lyon, Bordeaux, Montpellier... France

# School opendata integration

<http://osmose.openstreetmap.fr>



Opendata update

Bug !

**École non intégrée**  
École primaire Bois Raguenet

+ **source** = [data.gouv.fr:Ministère de l'Éducation nationale, de la Jeunesse et de la Vie associative - 05/2012](#)  
+ **amenity** = school  
+ **name** = École primaire Bois Raguenet  
+ **ref:UAI** = 0441893U

Erreur reportée le : 2013-06-08

[osmlink](#) [potlatch](#) [josm](#) [zone](#)  
changer le statut : [corriger](#) [faux positif](#)



# Challenges...

- Update OpenData after integration
  - How, feasible ?
- Send back data improvement to producer
  - Need of external stable ref