

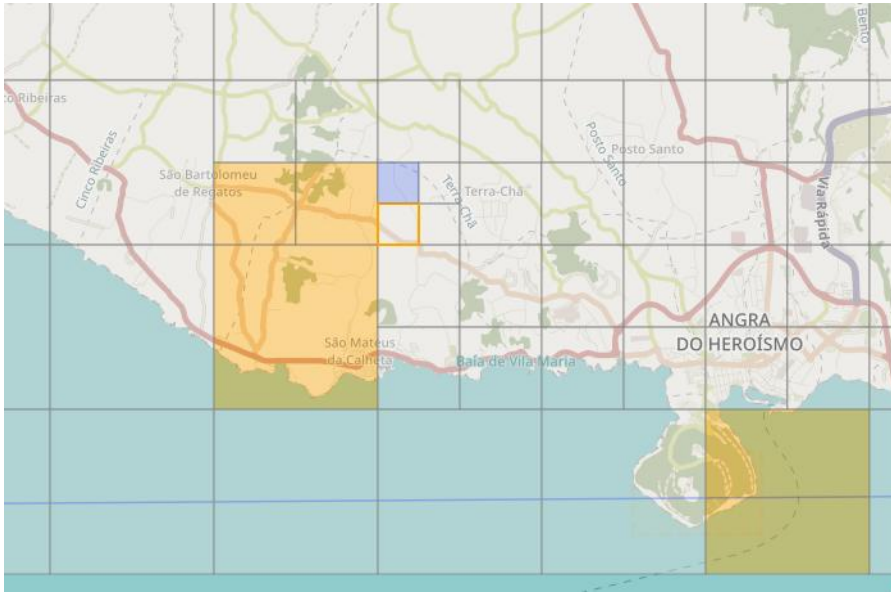
Continuous work during the whole project on the map of Terceira - mapping all buildings, roads and street names

We mapped in Terceira taking in consideration the real possibility of an earthquake disaster on the island. Taking advice from the Civil Protection in Angra do Heroísmo, we mapped the residential buildings, adding house numbers and street names, fire hydrants and assembly points. <http://taches.francophonelibre.org/project/316> [1]

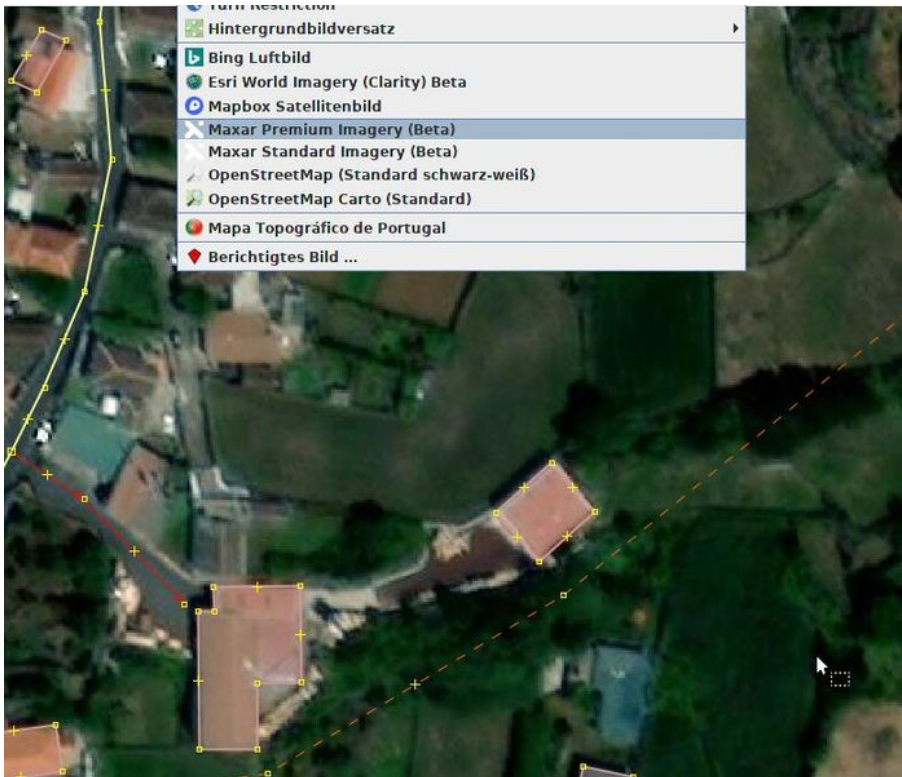
After visiting **Civil Protection** in Angra do Heroísmo, everyone became aware of the importance of mapping houses and streets in preparation for a **possible earthquake** in Terceira.

In order to keep the whole task manageable, we divided the island into **small squares** in the [Tasking Manager](#) [2]



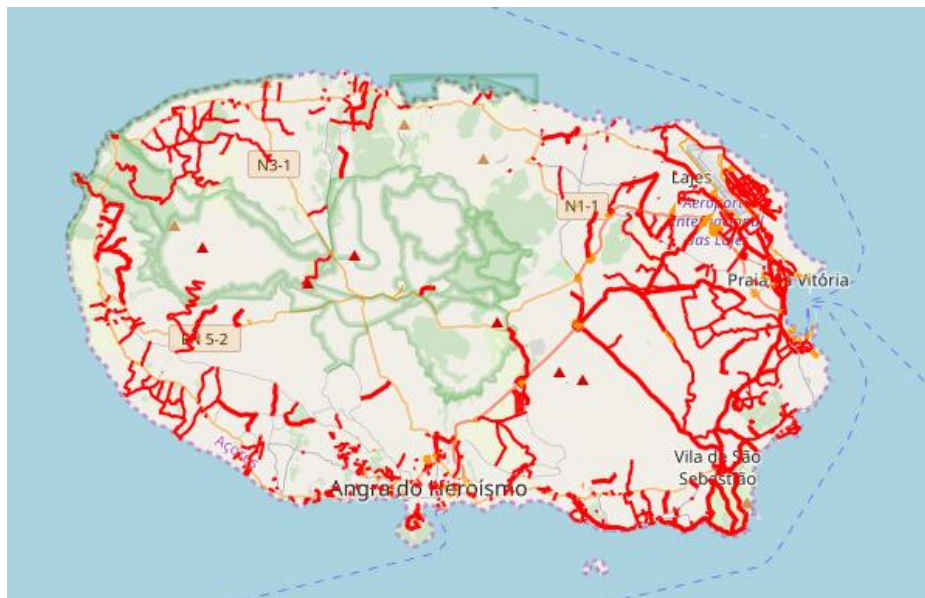
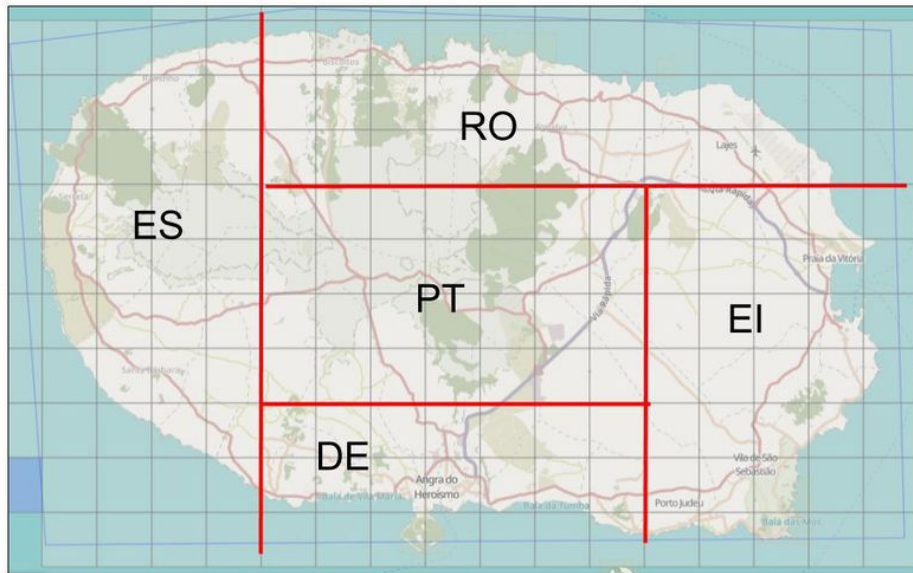


If a task was is to big, it can be splitted.

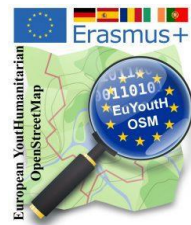


To know the location of roads and buildings, we used satellite images by Maxar Premium Imagery (Beta).

We shared the work between our partners.



The Portuguese team also has the task of determining the [street name](#) [3] on site and entering it in OpenStreetMap. Therefore we used the qa tool by Simon Poole.



With the end of the project, it can be seen that all houses and streets on the island have been mapped. Furthermore, as you can see in the picture below, about 95 % of the entries in the database have also been checked.

The screenshot displays the 'Gestionnaire de Taches' (Task Manager) interface. At the top, there is a navigation bar with 'About', 'English', and 'derFred'. The main header shows the task ID '#316 - euYouth_OSM' and options for 'Edit' and 'Export'. Below the header, there are tabs for 'Description', 'Instructions', 'Contribute', 'Activity', and 'Stats'. The 'Contribute' tab is active, showing a task titled 'Task #55' with a difficulty level of 'Not assigned yet'. A green button labeled 'Review the work' is visible. Below this is a comment box with a 'Comment' button. The main area is a map of an island with a grid overlay. A legend in the bottom left of the map area indicates the status of map entries: 'Cur. worked on (0)' (white), 'Invalidated' (grey), 'Done' (orange), and 'Validated' (green). The map shows a high percentage of green (Validated) areas. A scale bar indicates 10 km and 5 mi. The map is powered by Leaflet and OpenStreetMap contributors.

Links:

- [1] <http://taches.francophonelibre.org/project/316>
- [2] https://wiki.openstreetmap.org/wiki/Tasking_Manager
- [3] <http://qa.poole.ch/?zoom=7&lat=39.15&lon=-27.78>