



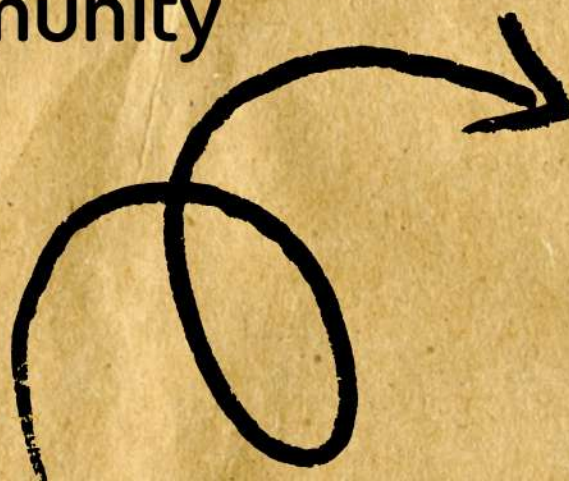
Community Field
Mapping Using QGIS

Presented by ratu belladina

Introduction of OSM

Bujang Gadis Kesehatan PGRI Palembang at
Kantor Lurah Kemuning
10 November 2024
Topic: Learn Openstreetmap

Next agenda: field mapping with community



Community mapping

Community mapping is a process of empowering locals in identifying various assets, resources and barriers (income-generating facilities, local services, recreational zones, and so on).

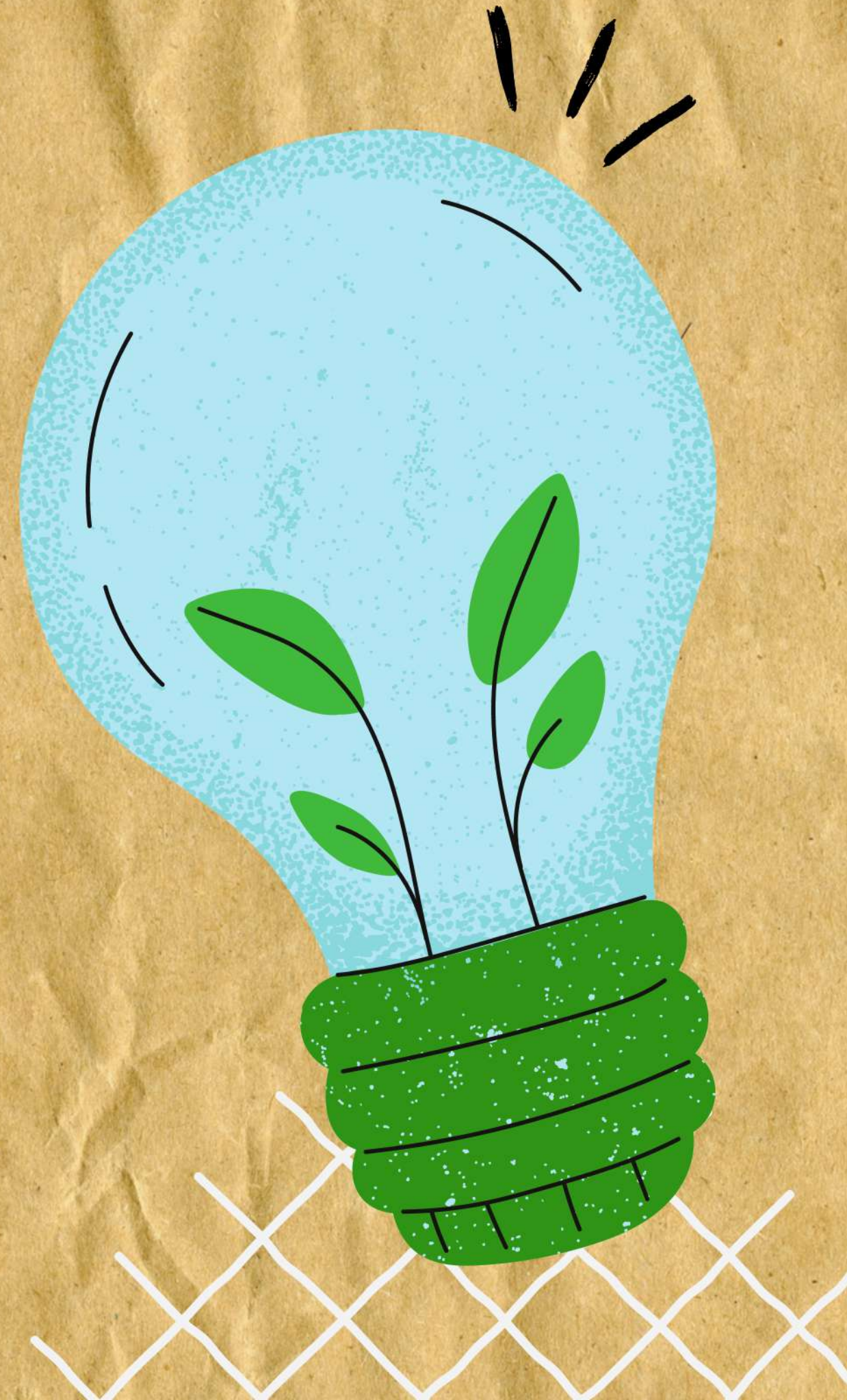


Benefits of community field mapping

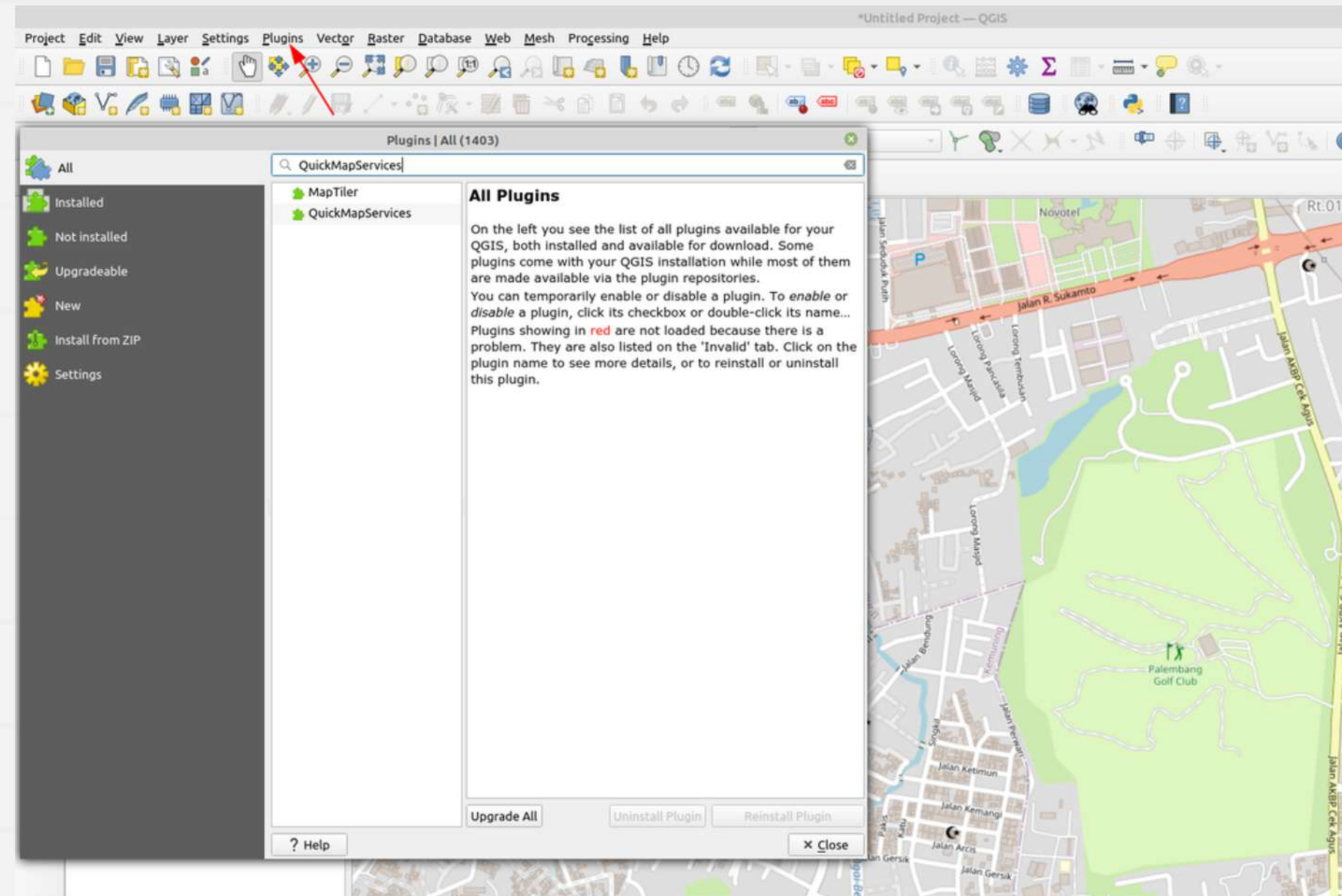
- Helps the community identify what's important to them
- Helps the community create a plan for using the land
- Helps the community share information with others

Creating Manual Mapping
Section using QGIS

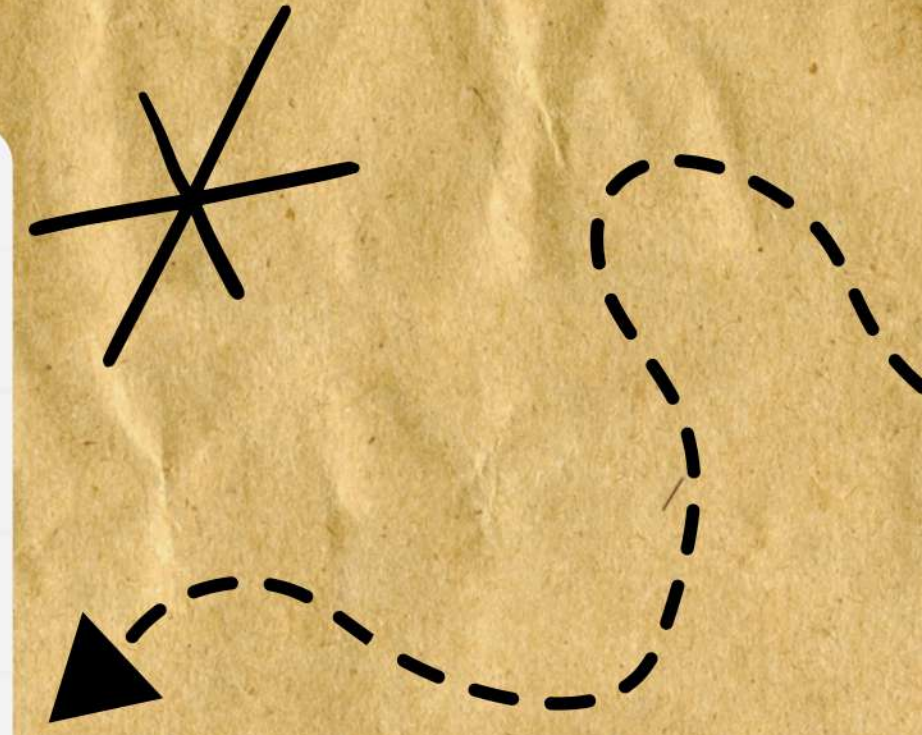
Importing Mapping
Sections into OSMAAnd

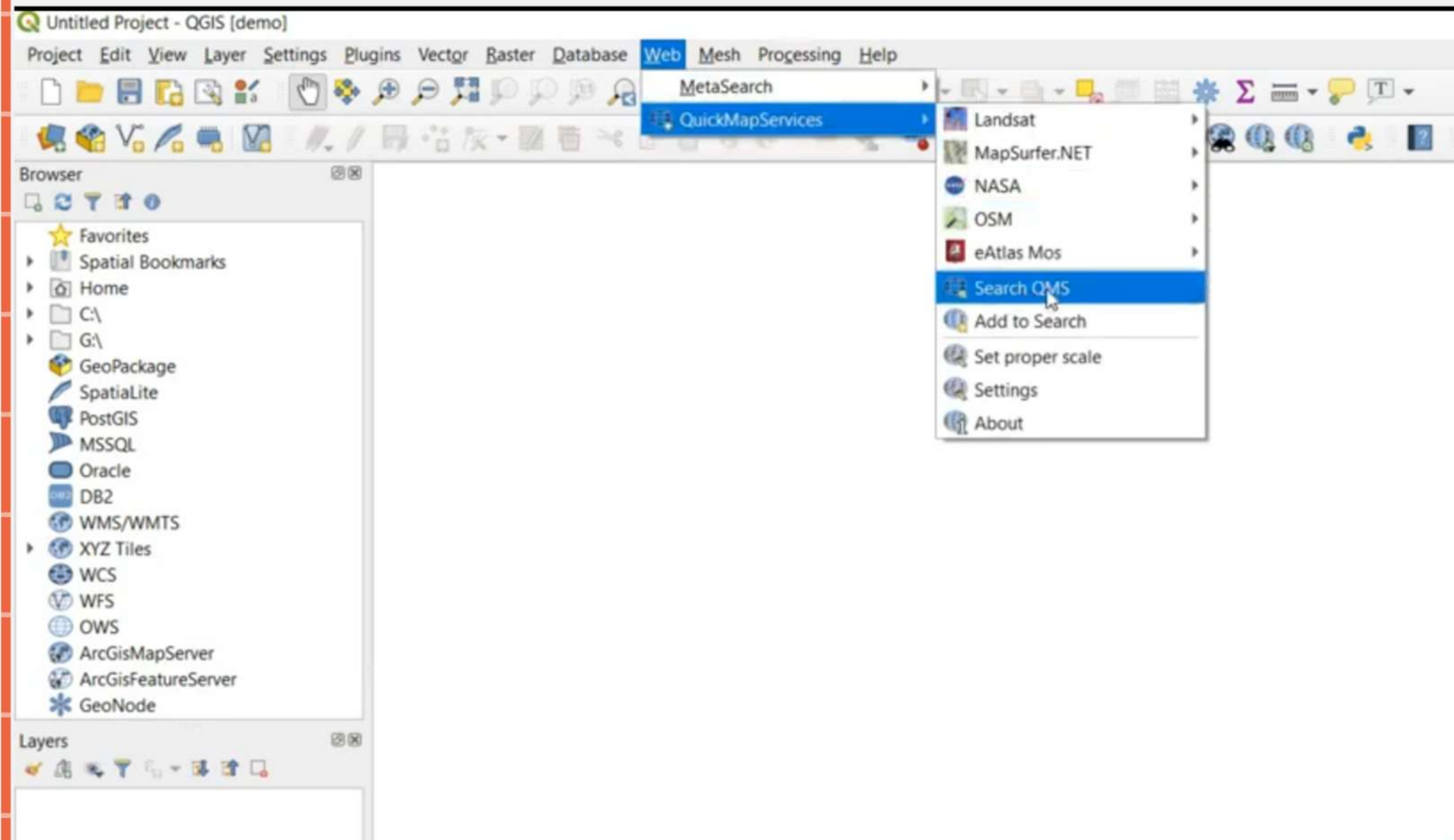


Create manual mapping section:
To begin, open QGIS on your computer and start a new project

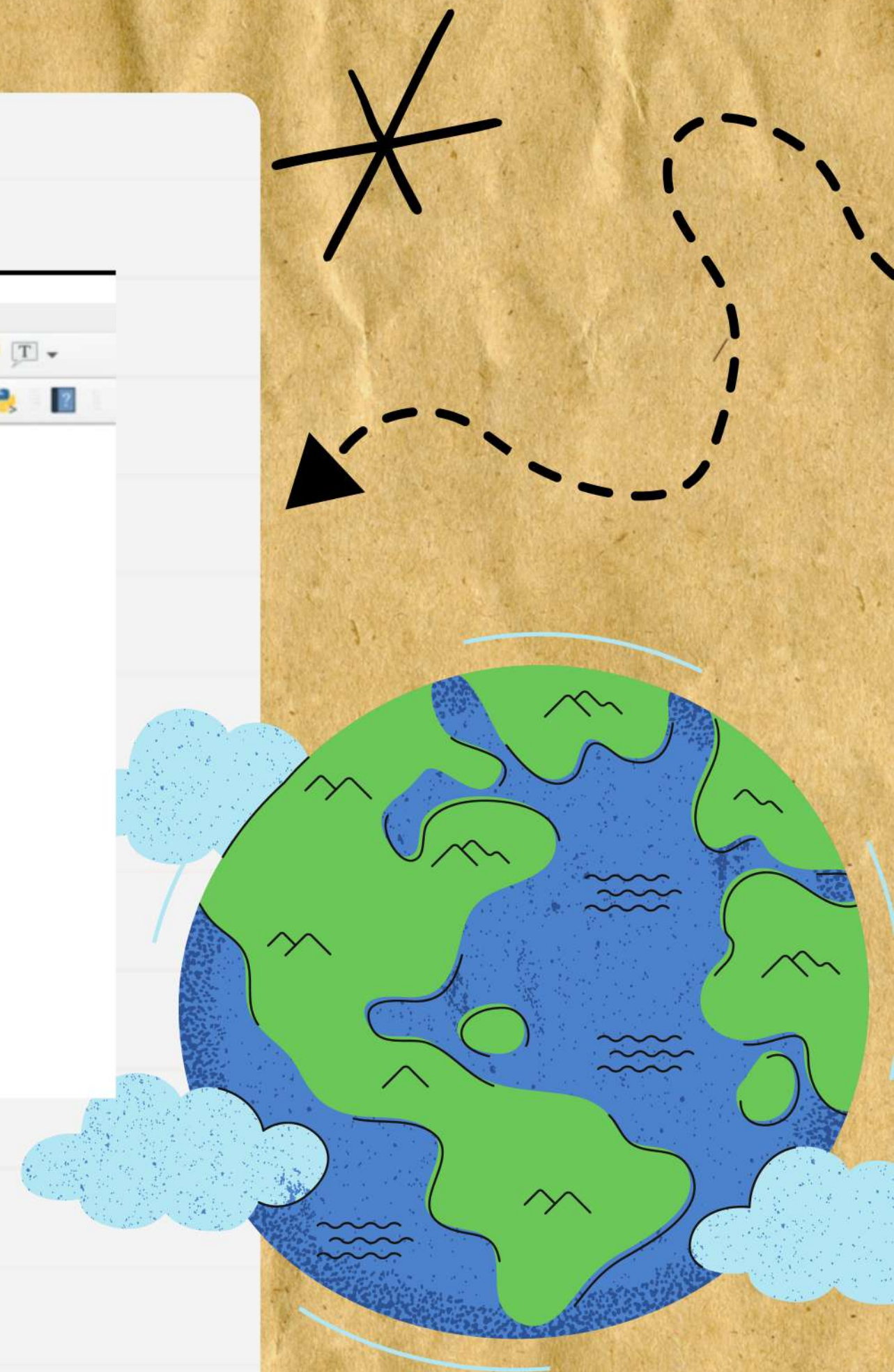


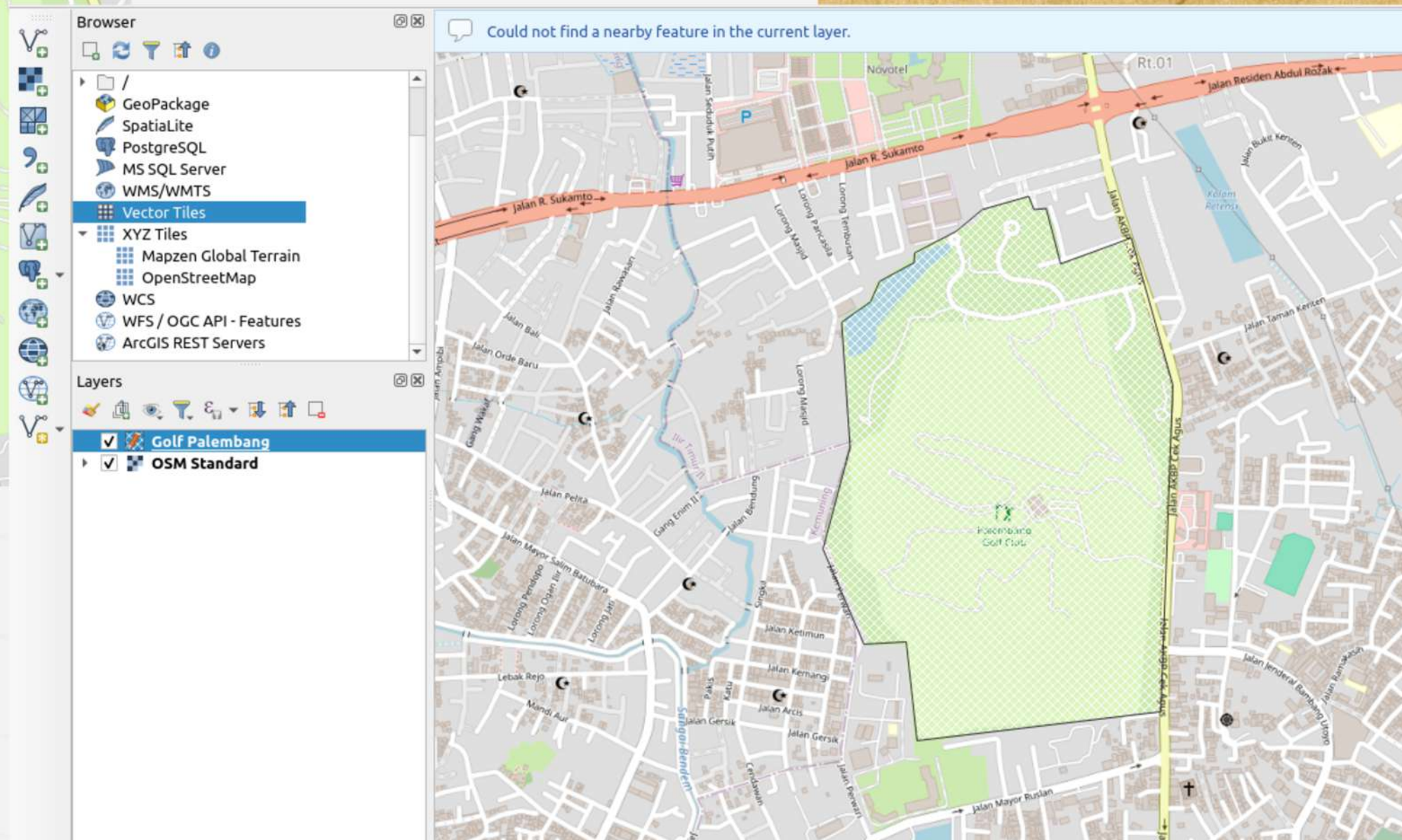
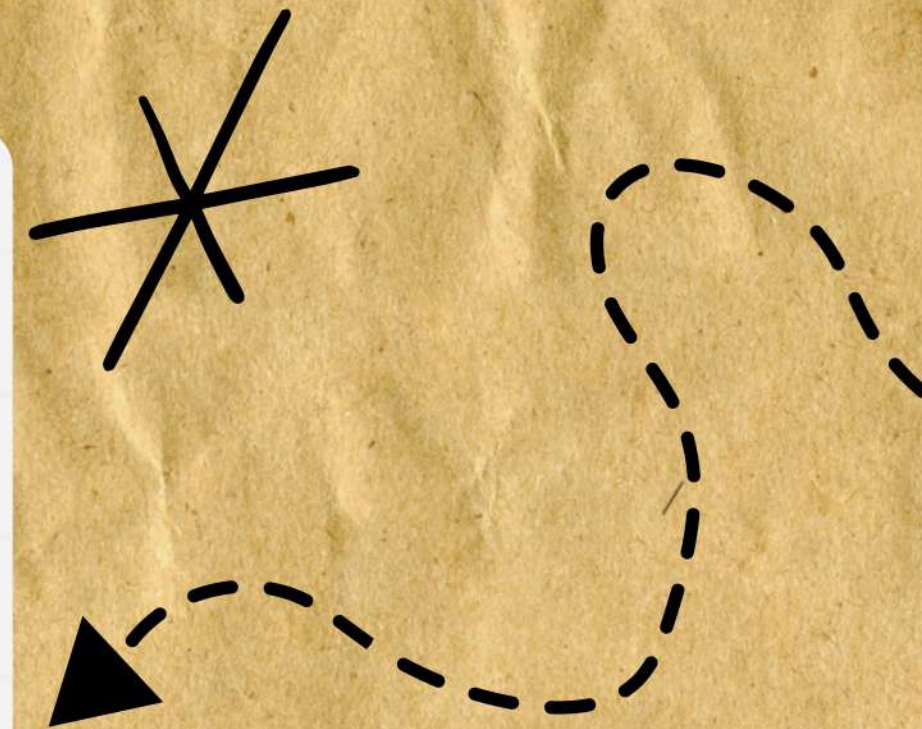
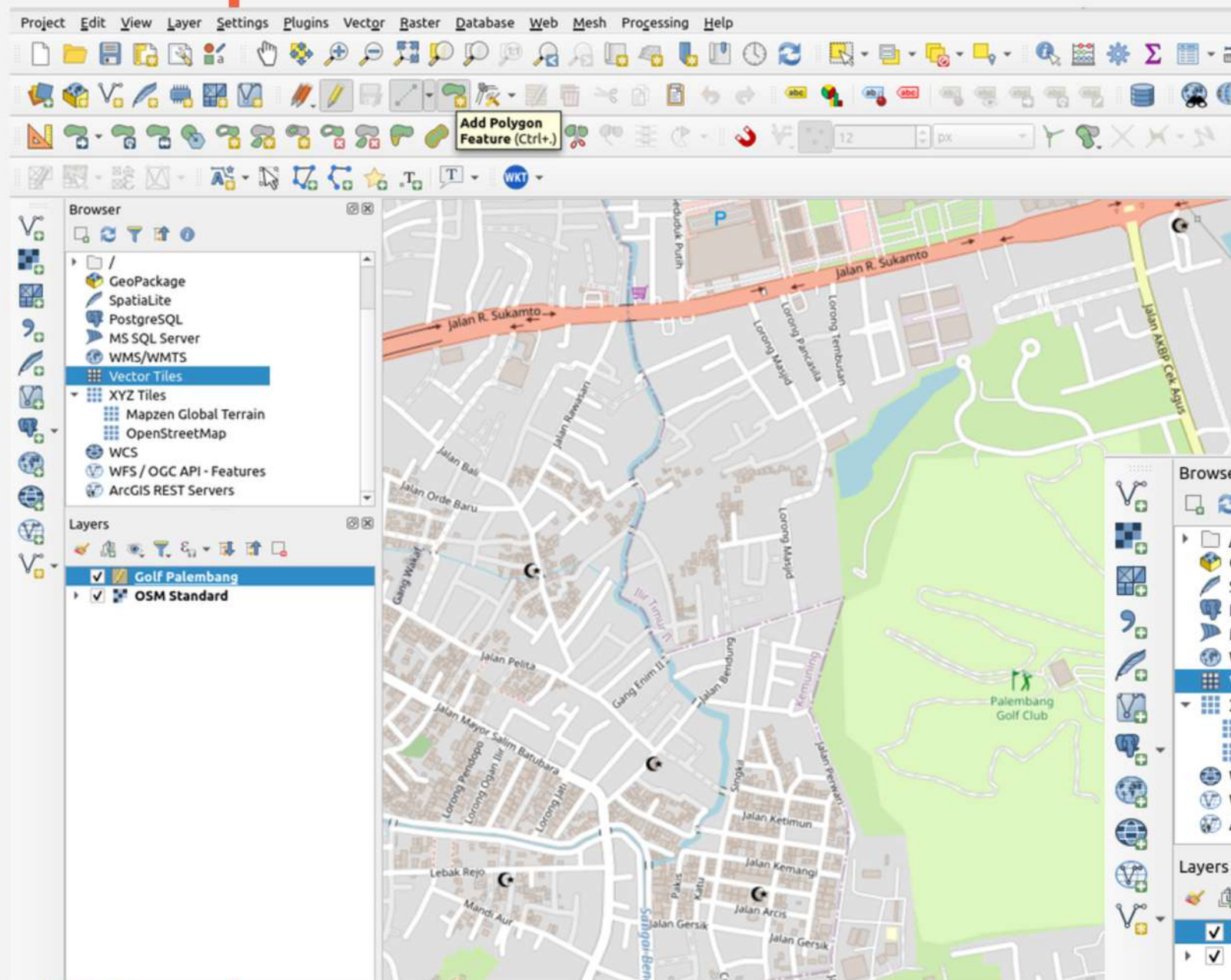
Using QuickMapServices as a basemap (OSM and bing)
Location: Palembang, Indonesia



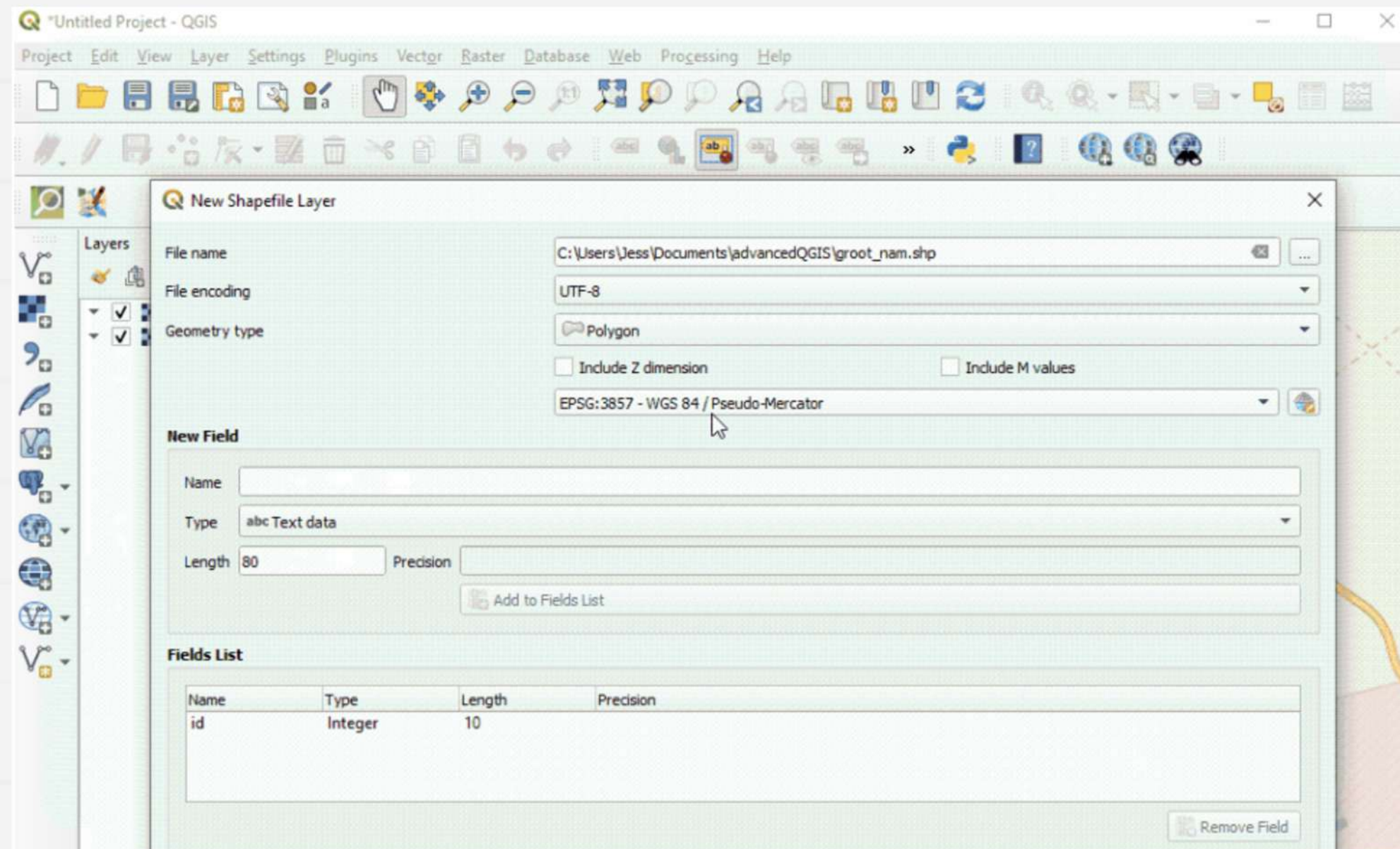


Using QuickMapServices as a basemap
Location: Palembang, Indonesia

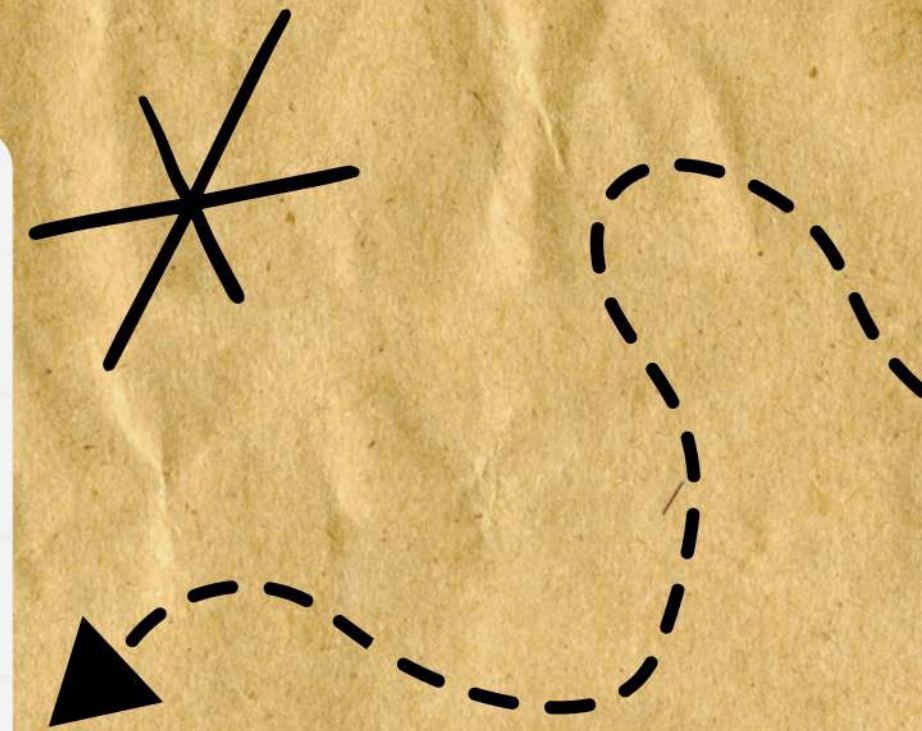


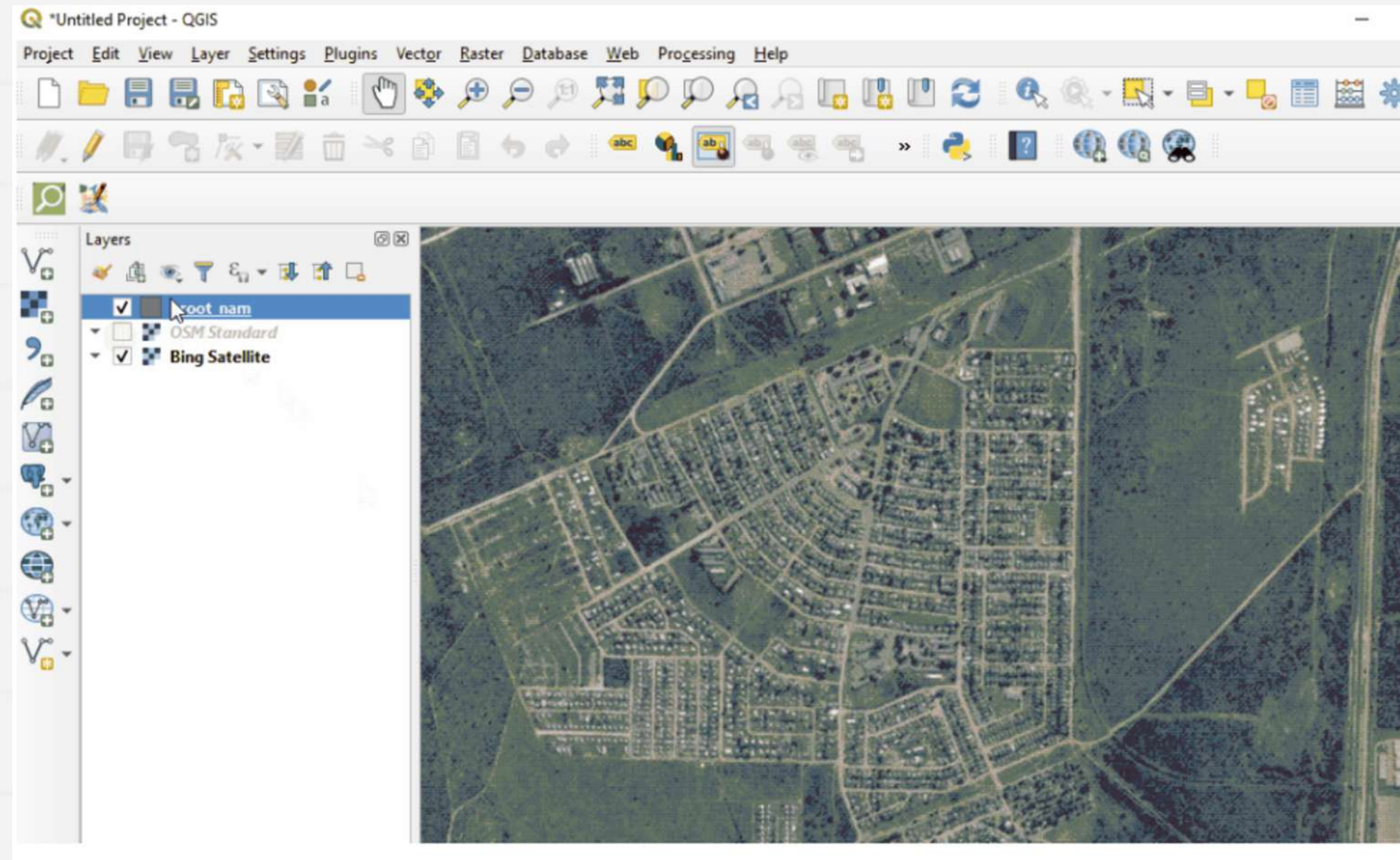


New feature -> add polygon
Golf Palembang

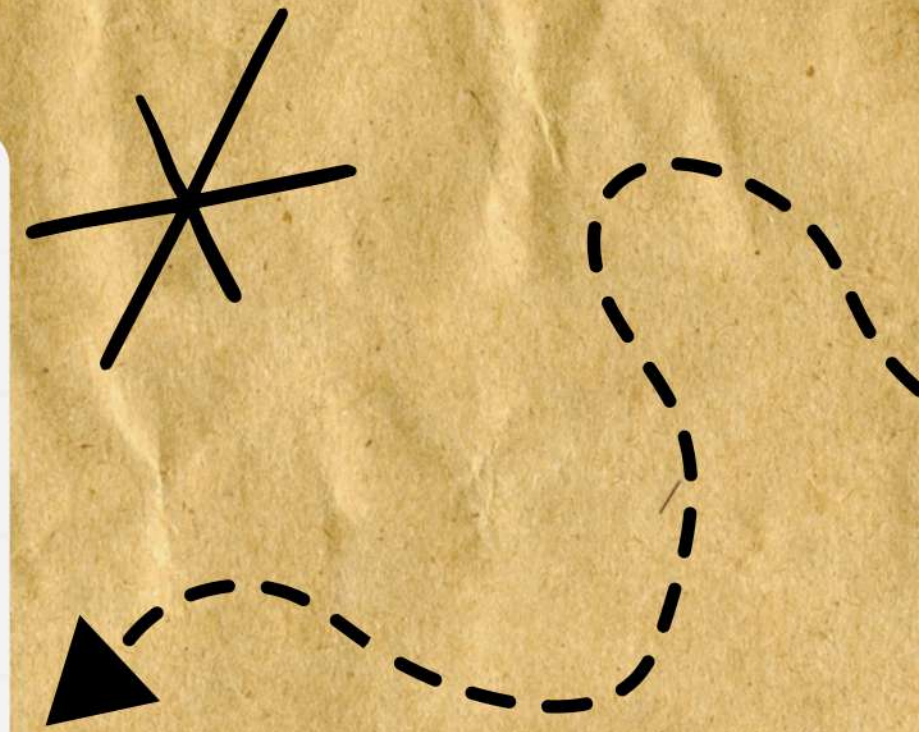


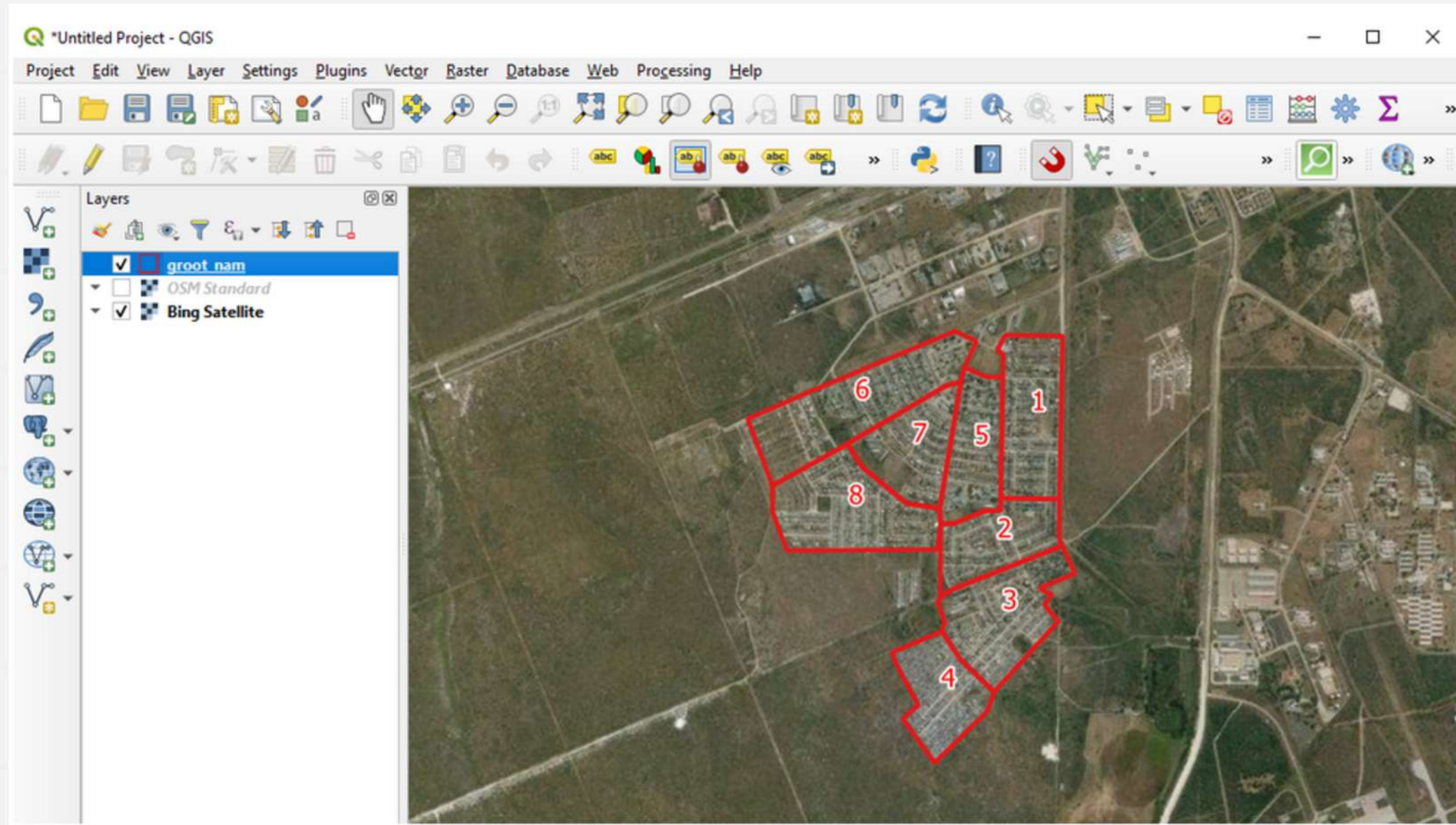
Create an empty shapefile by selecting Layer → Create Layer → New Shapefile Layer. After selecting the location and name of the file, make sure to assign the file as 'Polygon'.



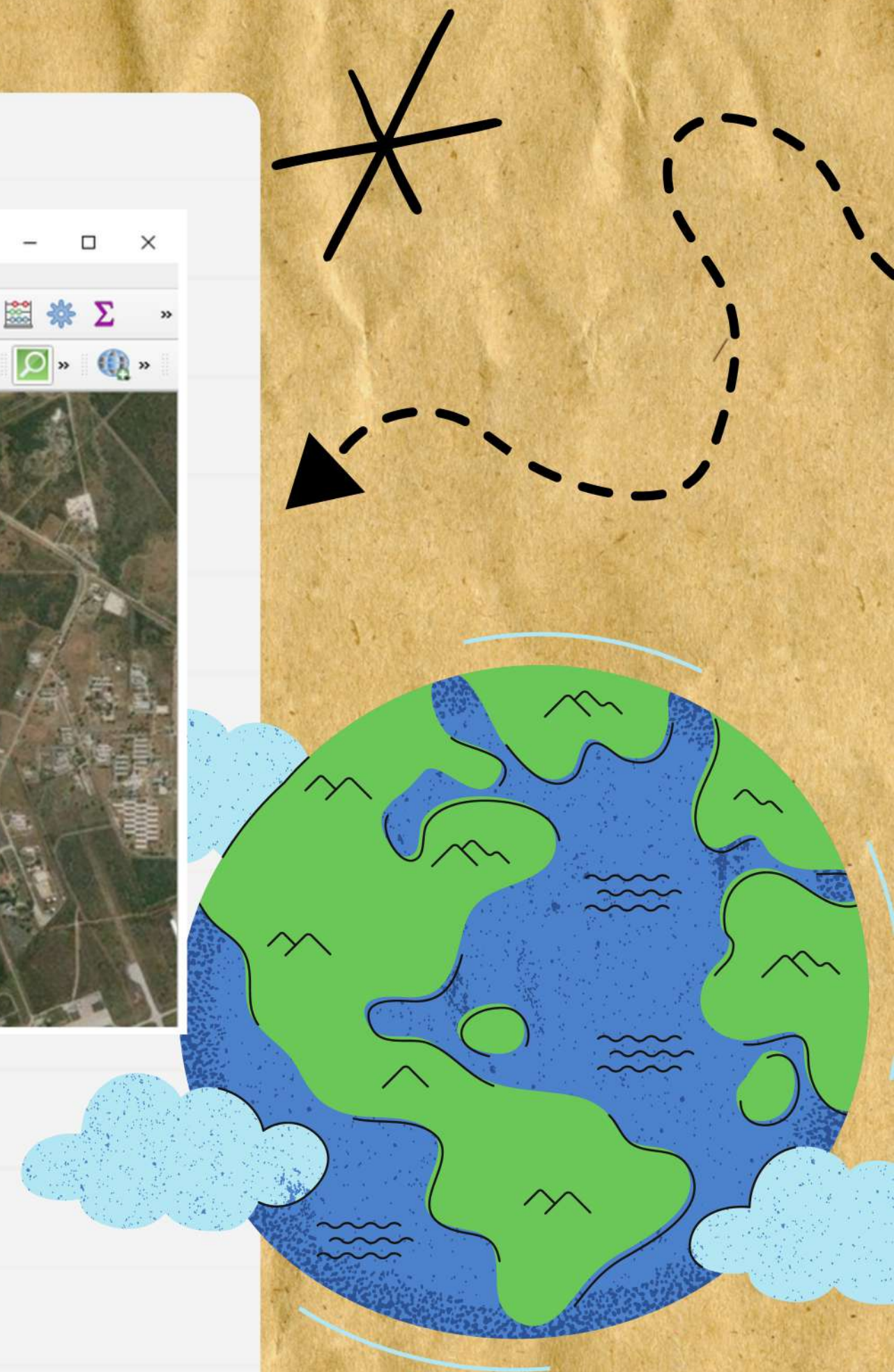


Enable editing, select the 'New feature' too. Create sections of the town, these sections should follow natural features or prominent landmarks such as swamps or roads.



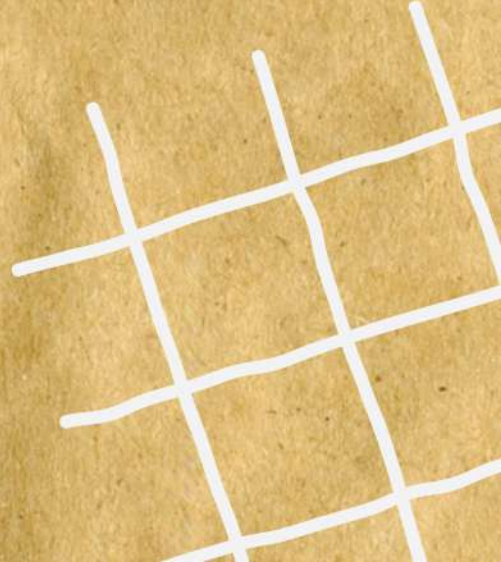
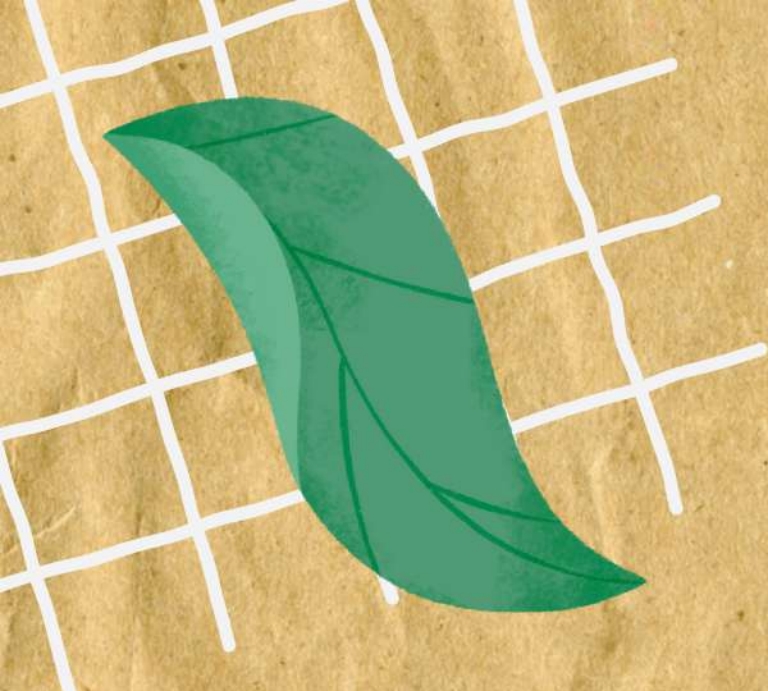


Giving numbers, and make your own style





OSMAnd provides a great alternative to printing out these sections maps. With OSMAnd, we can use the following steps to give sections to team members for use in the field directly on their mobile devices.





What should we do?

Run

Create centroids by selecting the Vector menu → shapefile as the Input layer, click Run.

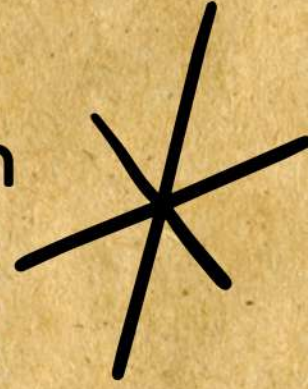
Export

Export the sections shapefiles and the centroids shapefile as a .gpx

Transfer

Transfer these two .gpx files from you computer to your phone

All tracks in OsmAnd are stored in a tab in the Menu → My Places → Tracks. OsmAnd processes the track file in GPX format, but KML & KMZ can be imported and converted to GPX





The sections gpx file will show you boundaries of the sections and the centroids gpx file will show you section numbers once a centroid point is selected.

With these two, community can move in the field using the OSMAnd app, locating their positions each time as well as the sections in which they are standing.

Thank you!

