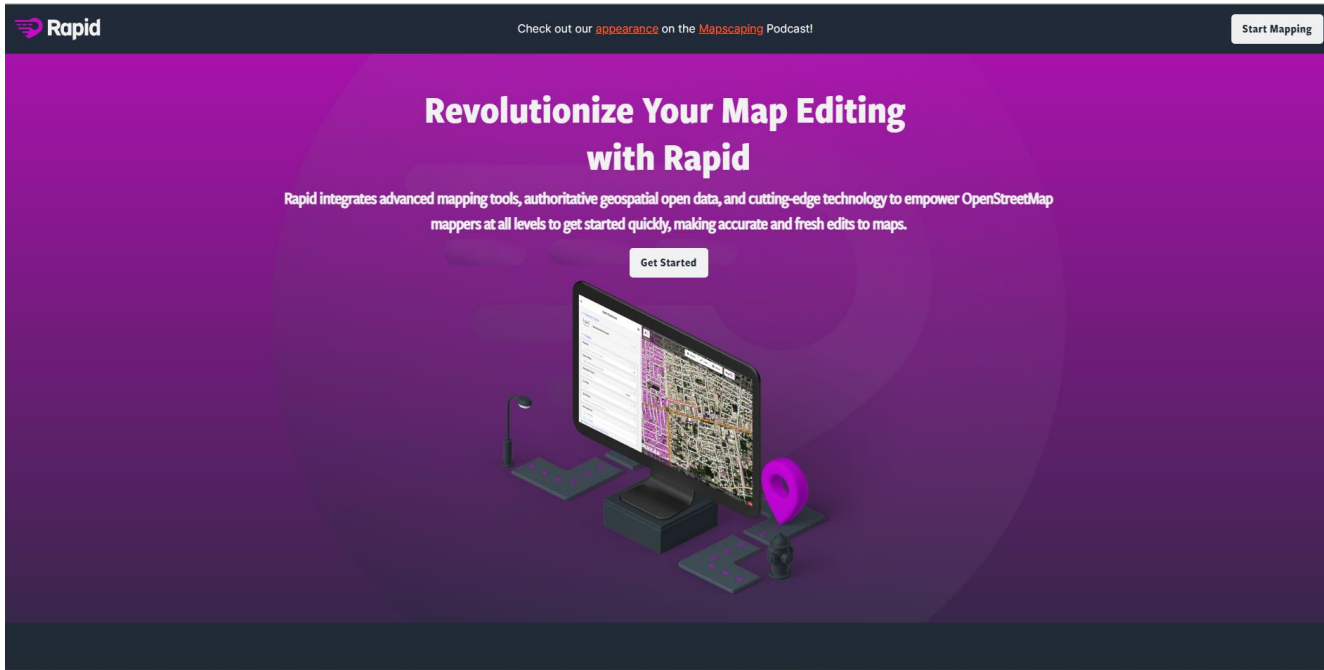




RAPID EDITOR AND MAPWITHAI



Rapid is a web-based editor for editing osm with additional AI recommendation features (roads and buildings)



mapwithai

Plugin in Josm that functions to get AI recommendations for those who want to map new roads and buildings in OSM

both Developed by facebook and Microsoft

HOW TO START EDITING IN RAPID

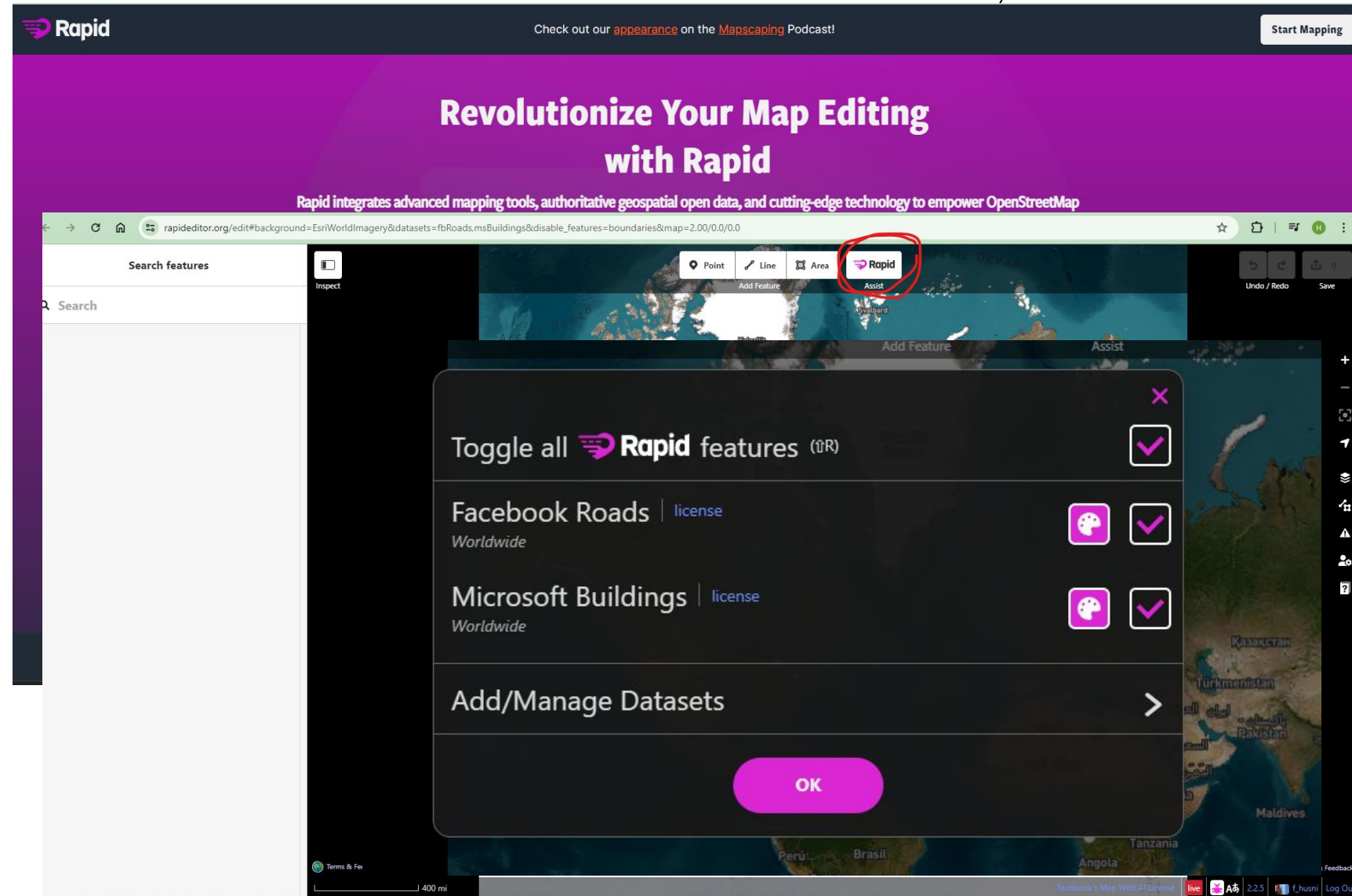
Click on the website <https://rapideditor.org/>

Click start mapping and log in using your osm account

Click the rapid menu to activate AI roads/buildings

Find the area you want to map

Map it



THE DATA IN RAPID

Purple building or road objects are recommended objects from AI for mapping.

The data displayed is existing OSM data and AI recommendation data which is colored purple (data that we can map or delete)

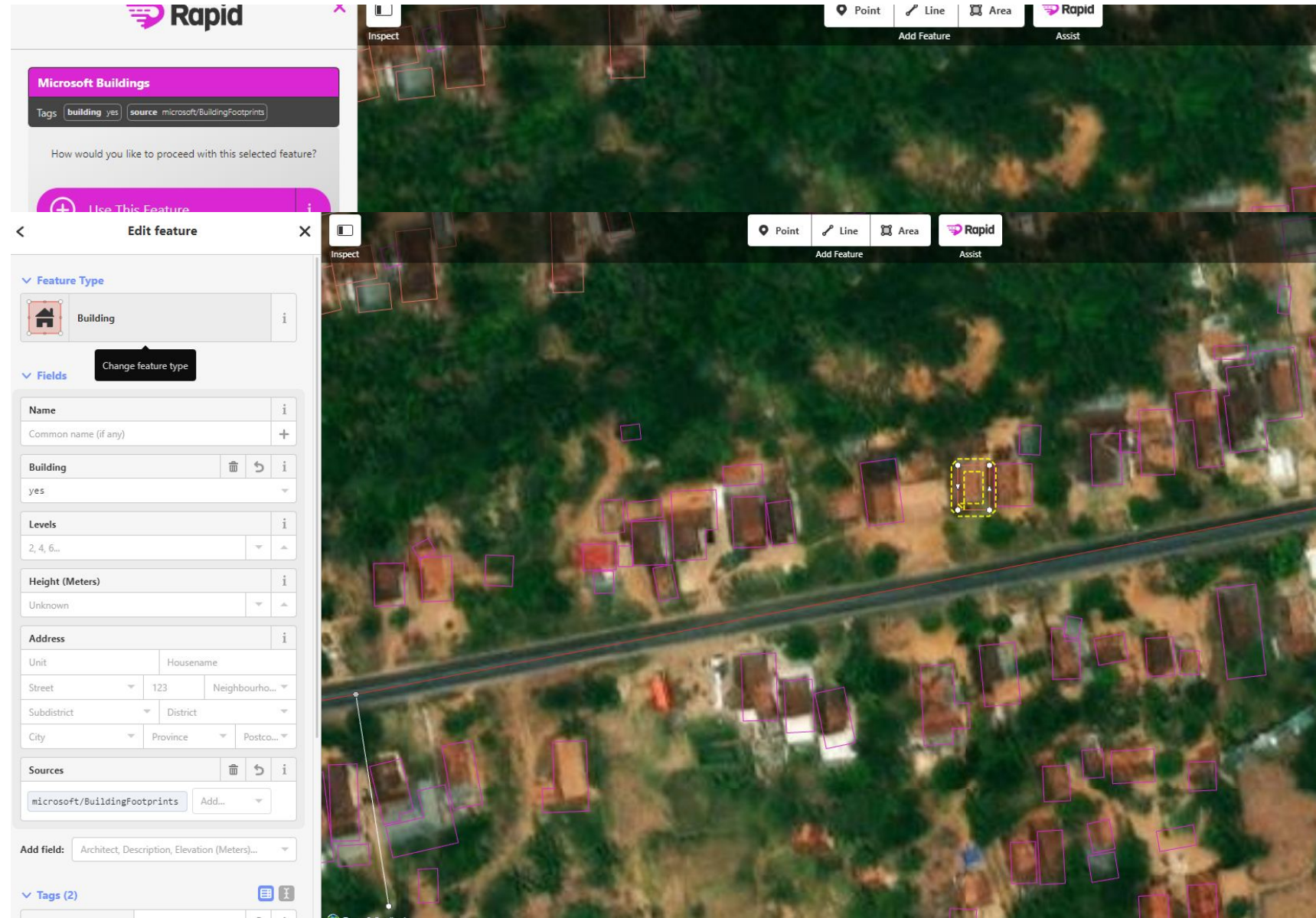


CLICK THE PURPLE OBJECT

Click the purple object (if we have identified it) to continue mapping data from or delete it

After clicking, the options "use this feature" and "ignore this feature" will appear

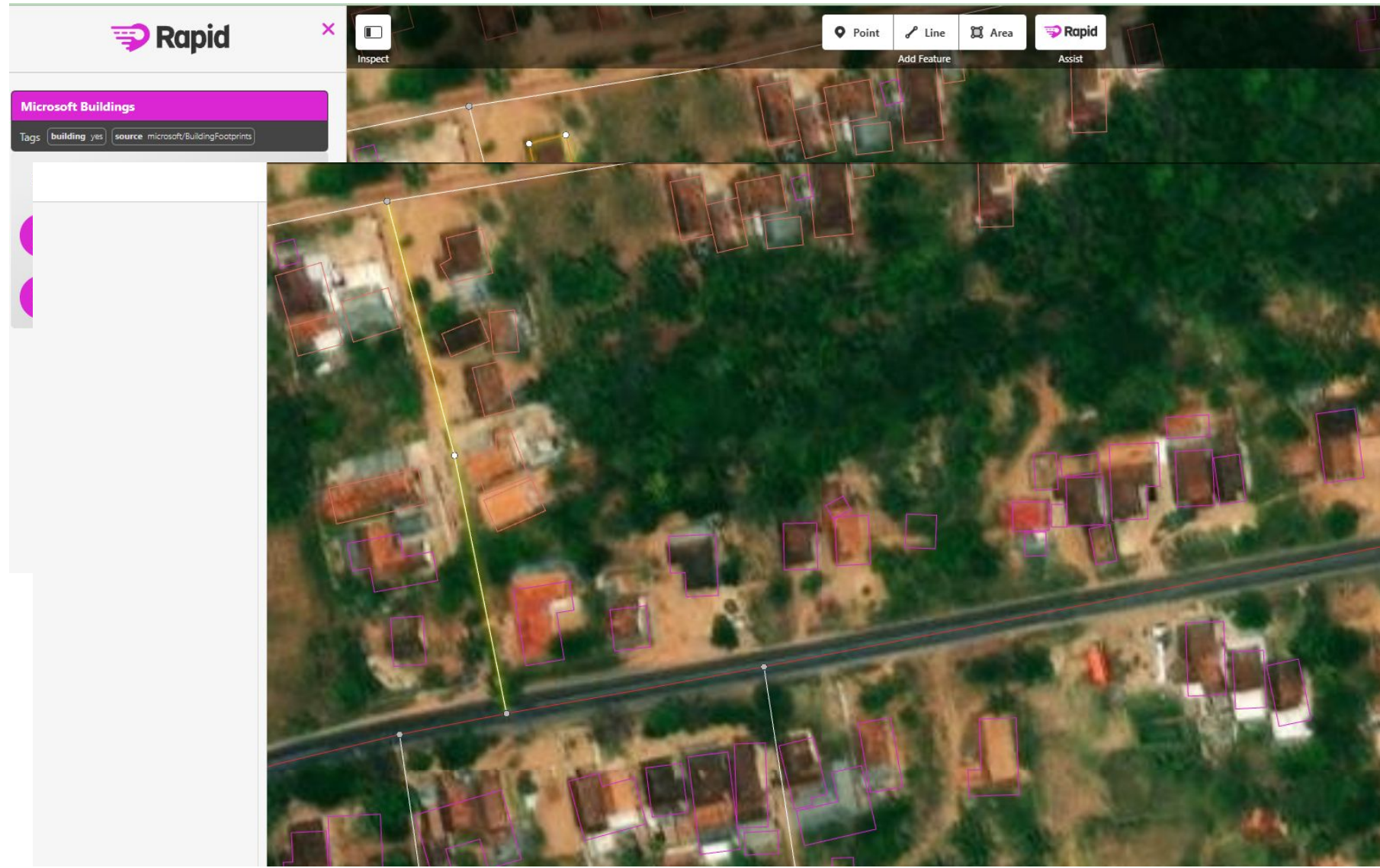
If we choose use this feature the object will automatically have a tag and the object can be edited and then uploaded



REMOVE INAPPROPRIATE DATA RECOMMENDATIONS

If the AI recommendation data does not match then we can delete the object by clicking on the object and selecting the "ignore this feature" option.

If the data has been adjusted, both in terms of position and tagging, then upload the data as usual



ROAD DATA CLASSIFICATION AI

The road class from AI usually has a residential or service class

Make sure the road class is correct before uploading, make sure it doesn't overlap with other objects and the geometry is correct and also add other attributes if there is supporting data

The image shows a screenshot of the Rapid mobile application interface. The top part of the screen displays the 'Rapid' logo and navigation icons for 'Point', 'Line', and 'Area'. Below this, there is a satellite map of a rural area with a road highlighted in yellow. A purple line indicates the road's boundary. A white 'Inspect' button is visible on the map.

In the foreground, an 'Edit feature' form is open. The form has a title bar with a back arrow, the text 'Edit feature', and a close 'X' button. On the left side of the form, there are three buttons: a purple '+ Use' button, a purple '- Ignore' button, and a purple 'Facebook Road' button. The form contains several sections:

- Feature Type:** A dropdown menu showing 'Residential Road' with an information icon 'i'.
- Fields:** A list of input fields:
 - Name:** An input field with an information icon 'i'.
 - Common name (if any):** An input field with a plus sign '+'. Below it, the text 'Assumed to be No' is displayed.
 - One Way:** An input field with an information icon 'i'.
 - Speed Limit:** A dropdown menu showing '40, 50, 60...' and a unit selector 'km/h' with an information icon 'i'.
 - Lanes:** A dropdown menu showing '1, 2, 3...' and an information icon 'i'.
 - Surface:** A dropdown menu showing 'Asphalt, Unpaved, Paved...' and an information icon 'i'.
 - Structure:** A list of radio buttons for 'Bridge', 'Tunnel', 'Embankment', 'Cutting', and 'Ford', with an information icon 'i'.
 - Allowed Access:** An input field with an information icon 'i'.



USING THE MAPWITHAI PLUGIN IN JOSM



ADD PLUGINS

The screenshot shows the JOSM Preferences dialog box with the 'Plugins' tab selected. The left sidebar lists various preference categories, with 'Plugins' highlighted. The main area shows the 'Plugins' section with a search bar containing 'mapwithai'. A single plugin is listed: 'mapwithai: Version 829 (local: 829) (requires: pmtiles;utilsplugin2)'. Below the plugin name is a description: 'Allows the use of MapWithAI data in JOSM (same data as used in RapiD) [More info...](#)'. At the bottom of the dialog are buttons for 'Download list', 'Update plugins', 'OK', 'Cancel', and 'Help'. The 'Expert Mode' checkbox is also visible at the bottom left.

Preferences

Plugins
Configure available plugins.

Plugins | Plugin update policy | Mapillary

All Installed Available

mapwithai

mapwithai: Version 829 (local: 829) (requires: pmtiles;utilsplugin2)
Allows the use of MapWithAI data in JOSM (same data as used in RapiD) [More info...](#)

Download list Update plugins

Expert Mode

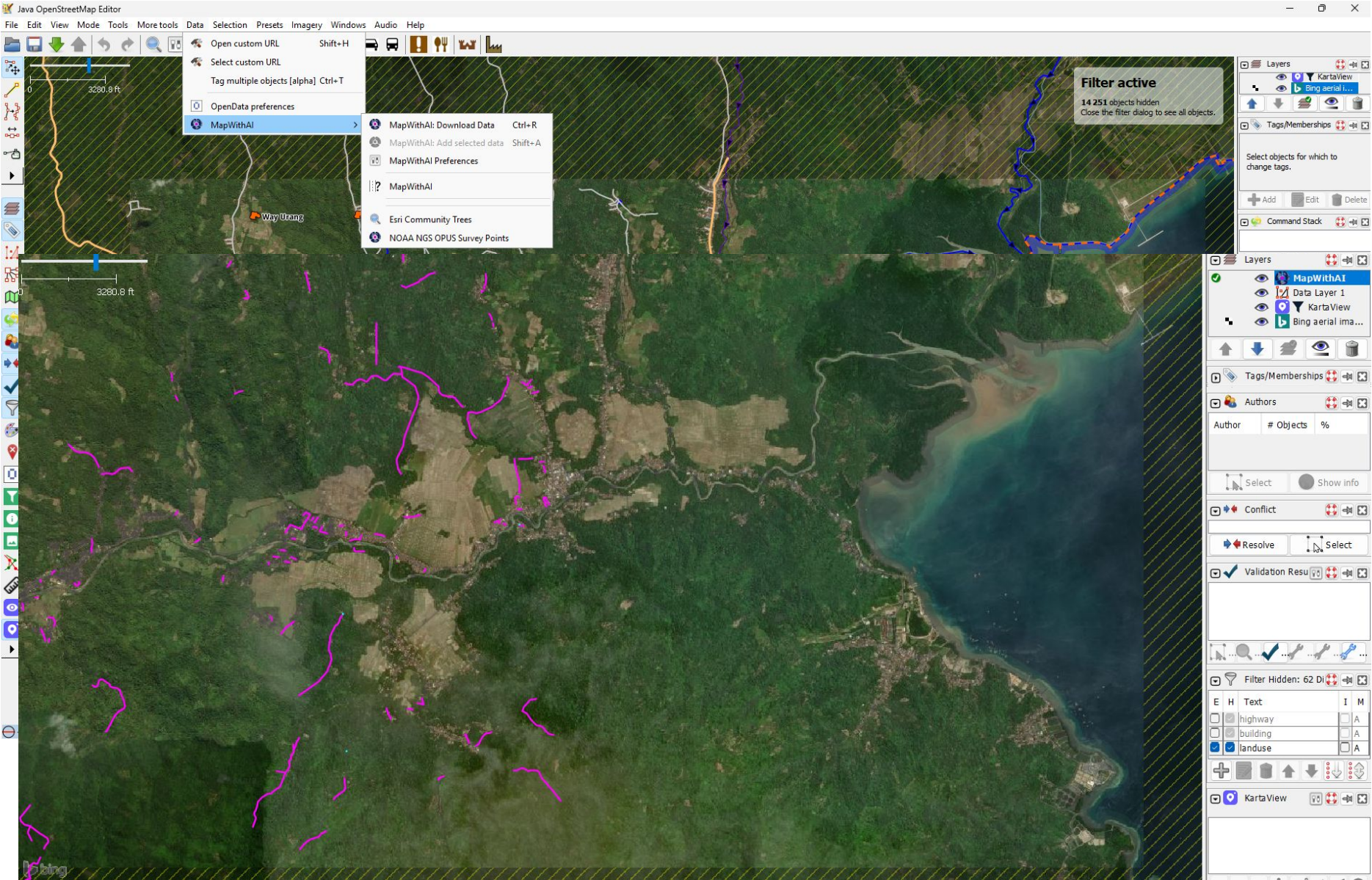
OK Cancel Help

HOW TO START EDITING

Open a project or region in josm

Click the "data" menu then select mapwithai or click ctrl+R

Then a new layer will appear containing AI recommendation objects



Click on the road or building you want to select (make sure the shape and position are appropriate)

Once the object is selected, press shift+A

Then the selected object will go to the main layer and be ready for further editing

After editing and validation, upload the data



FEATURE ADVANTAGES

Digitization results will be better and more accurate if they are in areas with regular objects or patterns or areas that are not too dense

Time efficiency of digitization for adding new roads and buildings



LACK OF FEATURES

road geometry that is not connected to nearby roads

Error in reading object
(road becomes River)

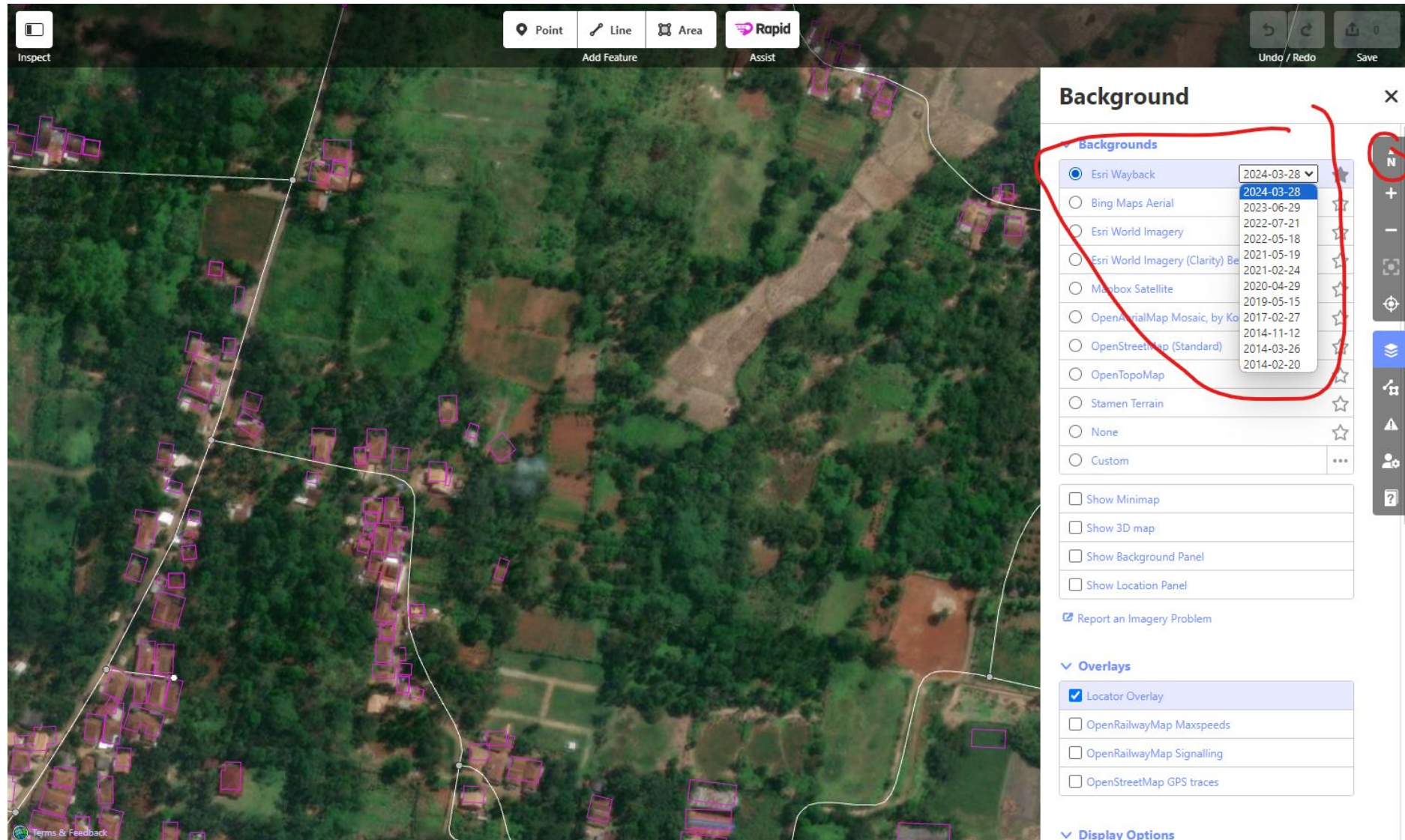
Errors in reading building objects
(overlapping, building shape) which usually occur in dense areas



UPDATE TO THE LATEST VERSION V2.3 (RAPID)

1. Esri Wayback imagery: view historical or date picker
2. Map rotation: rotate map (shift+left/right arrows)
3. Maproulette integration

Esri wayback dan maprotation



AI IS A GOOD START BUT AI IS NOT 100% PERFECT
-META TEAM